



202A Fullers Road Chatswood NSW 2067
Ph: (02) 9413 1233 Mob: 0414 504 832
Internet: www.wintonsrs.com.au
Email: leswinton@bigpond.com



Winton Sustainable Research Strategies Pty Ltd – Formerly Artcraft Research

Market and Social Research + Evaluation + Consultation + Insights
Advising Government and Community Sectors since 1981

Report on the
2015 Community Survey
(including FFTF Questions)

Final 5 July 2015

Presented to
Palerang Council

By Les Winton

5 July 2015

Table of Contents

Executive Summary	1
1. Introduction.....	3
2. Research Methodology	3
3. Summary of the Main Survey Findings	5
3.1 The Fit for the Future (FFTF) Findings	5
3.1.1 Centres of Influence	5
3.1.2 Amalgamation	6
3.2 The Local Environment Plan	7
3.3 Council's Management Plan	11
3.4 Bungendore and Braidwood Options	15
4. Detailed Tabular Results.....	16
Appendix: 2015 Questionnaire	52

Executive Summary

Introduction:

This report covers a community survey undertaken by Winton Sustainable Research Strategies Pty Ltd for Palerang Council during June 2015 and compares the results with earlier surveys in April 2005 and August 2011, also undertaken by Winton Sustainable Research Strategies. The study involved administration by telephone of a structured questionnaire of around 15 minutes duration to a stratified random sample of 1,100 people (aged 18 years and over) drawn from throughout the Palerang Council area during August 2011.

The Study Findings:

Fit for the Future:

Majorities of the population venture beyond Palerang Council's borders for major household shopping (78.7%), major food and grocery shopping (75.2%), entertainment (74.1%), healthcare providers (54.2%) and educational activities (53.0%), but with only a minority doing so for minor top-up food and grocery shopping (21.3%). In all cases, most of those venturing beyond Palerang go no further than Queanbeyan or Canberra. Clearly, Canberra (far more so than Queanbeyan) is the main destination for major household items, healthcare providers, entertainment and education, whereas more people do their major and top-up food and grocery shopping in Queanbeyan than in Canberra.

More than half the population (54.8%) would like Palerang to continue as an independent council in its own right, three in ten (31.9%) want it to amalgamate with Queanbeyan (20.5%), Goulburn (8.6%), Yass (0.4%) or some other council (1.4%), while less than one in ten (8.3%) would like to see it split up among adjoining councils, with 6.0% unsure.

The Local Environment Plan

At the beginning of the survey, people were asked to describe what they felt to be the good things, and not so good things, about living where they do. As in 2005 and 2011, the top six positive mentions in 2011 were: the wide open spaces/ fields/ countryside (69.6%), being quiet/ peaceful (58.9%), a sense of community/ friendly people (49.4%), being close to Canberra (35.3%), the fresh air/ unpolluted atmosphere (23.1%) and being close to other places (Sydney, Coast, Melbourne, etc) (17.3%) (See Table 4). The top six not-so-positive mentions in 2015 were the roads (poor upkeep, potholed) 32.9%, poor public transport (15.7%), high prices (10.4%), dangerous drivers/ road rage (9.8%), inadequate garbage collection (7.2% and growing too fast/ too many new homes (6.8%) (See Table 4).

Once prompted, almost everyone (95.7% vs 95.8% in 2011 and 96.7% in 2005) is at least quite satisfied overall with their town or village or area as a place to live, with three in four being at least very satisfied (75.2% in 2015 vs 70.5% in 2011 and 75.2% in 2005) (See Table 5). All eleven specific satisfaction measures examined in 2011 also emerged on the positive side of the ledger. Interestingly, in 2015 there has been a marked improvement since 2011 in terms of connecting roads through the area (69.4% vs 59.2%). (See Table 5 and Chart 1)

Just over half of the people would like to see the population of the area stay the same size (51.8% in 2015 vs 53.0% in 2011 and 51.1% in 2005) or even decrease (2.5% vs 1.5% vs 1.4% in 2005) over the next 20 years, with only around four in ten opting for an increase in the population (44.4% in 2015 vs 43.3% in 2011 and 40.5% in 2005). (See Tables 6).

Although continuing to decline, a vast majority (82.2% in 2015 vs 84.4% in 2011 and 87.3% in 2005) would like to see the character of their area stay the same in the future, with only around one in seven (17.8% vs 15.6% vs 12.7% in 2005) wishing for a change. (See Tables 7).

Majorities maintain that smaller block sizes detract from the character of the area (61.5% in 2015 vs 64.3% in 2011), that medium density developments detract from the character of the area (56.8% in 2015 vs 58.5% in 2011). (See Tables 8 and 9).

Council's Management Plan

To assist Council in developing its management plan, the survey measured community perceptions of Council's performance overall, and in terms of six specific aspects. (See Tables 10 and Chart 2). Overall, the Council emerges on the positive side of the ledger, with just over half (50.1% in 2015 vs 53.6% in 2011 and 58.4% in 2005) scoring its overall performance positively (ie, scoring it 6 or above on a 1 to 10 scale where 10 is excellent and 1 is terrible).

While Council's performance is thought to have improved since 2005 in terms of the courtesy and friendliness of the, the knowledge and accuracy of staff and the management of residential development, it has fallen in terms of household garbage collection and the maintenance of connecting roads and local roads (See Table 10 and Chart 2).

Close to a majority (44.8% in 2015 vs 47.3% in 2011 and 53.1% in 2005) claims to be well-informed about the overall activities and initiatives of the Council, and in a new question in 2005, over four in ten (44.9% in 2015 vs 44.8% in 2011) give Council a score of six or more out of ten in terms of how well the Council consults and engages with the community. (See Tables 11 and 12).

Most people currently claim to obtain information from Council from items in their local newspaper (88.9%) and/or newsletters (61.7%), followed at some distance by the Council website (32.1%) and announcements on local radio stations (15.5%). However, in terms of the order in which they would prefer to receive information from Council, more would like to receive it from newsletters (80.2%) than from local newspapers (79.6%) (See Table 13).

Since the last survey Council has issued frequent emailed newsletters in place of quarterly mailed newsletters. Figures for the new format are very similar to those for the old newsletter. Around two-thirds claim to have looked at Council's emailed newsletter (65.6% vs 64.6% in 2011), of whom two-thirds (65.9% vs 67.6% in 2011) regarded it as excellent, very good or good (See Tables 14 and 15).

Bungendore and Braidwood Options

Among Bungendore residents, the perceived importance levels of establishing the viability of the water supply, restricting development on floodplains and upgrading of the sewerage treatment works are all high and similar to 2011. (See Table 16).

Majorities of Bungendore and Braidwood residents both continue to regard the building of a traffic bypass around their respective towns to be at least quite important. (See Tables 17).

1. Introduction

In September 2014, the State Government announced the Fit for the Future (FFTF) reform program in response to the Independent Local Government Review Panel's (ILGRP) final recommendations of October 2013. The FFTF program is about ensuring that councils are able to effectively deliver the range of services needed to support their communities.

The FFTF initiative requires each NSW council to assess its financial position, and to demonstrate that it has the scale and capacity to effectively maintain critical infrastructure and deliver the range of services required to support their communities.

All assessments must be based on seven financial benchmarks that have been developed specifically for this purpose. The intent is that a sound council should meet or exceed these benchmarks. As part of this process, each council is to consider how recommendations made by the ILGRP might improve their position. In many cases, this involves assessment of the potential benefit that might be derived from joining with one or more neighbouring councils to form a new local government area (LGA).

During the month of May, Council sought community input via several mechanisms: a reply paid card included with an information brochure, a voluntary web-based survey, community workshops in Braidwood and Bungendore, followed by this telephone survey in early June.

In addition to the FFTF questions this survey also covered various other question areas previously asked in the 2005 and 2011 surveys about:

- The local environment plan
- The management plan
- Several Bungendore and Braidwood options
- Socio-demographics.

2. Research Methodology

The study involved administration by telephone of a structured questionnaire of maximum 15 minutes duration to a stratified random sample of people drawn from throughout the Palerang Council area in the same way as that employed in 2005 and 2011.

To ensure that the results in each of the regions could stand up to statistical scrutiny, a total sample size of 1,100 people (aged 18 years and over) was chosen, with the number of people interviewed in each region being calculated so that the statistical tolerance in each region is equal at around $\pm 6.6\%$ on 50/50% results at the 95% level of confidence. The sampling tolerance on total results is around $\pm 2.8\%$. Results were then weighted at the computer analysis stage to realign the total results to population proportions.

	Region	Estimated Population (ABS ERP 2014)	Weighted sample (proportional to population)	Unweighted sample (for consistent sampling tolerances)
1	Braidwood area	4,230	300	400
2	Bungendore area	10,152	720	500
3	Captains Flat area	1,128	80	200
	Total	15,510	1100	1100

Following drafting and pilot-testing of the questionnaire, a process of random digit dialling together with screening questions on location of residence was used to develop the sample. Filter questions were

also used to ensure that only households living in or close to the towns and villages were included in those sub-samples, with the rest being classified into rural residential dwellings and farms.

We employed a three call approach in the interviewing process, which involves making one initial call and then up to 2 call-backs to not-at-homes on different days at different times before sample replacement. This approach provides a more representative sample than simply interviewing the first 1,100 people who answer the phone and agree to take part in the survey. By definition, the telephone approach leaves out all households where no phone contact is possible. Although this comprised only a relatively small proportion of households in regional and rural areas until recently, growing numbers of households, particularly younger households, are now replacing landlines with mobile phones, so a melded landline and mobile phone sample is now used to overcome this problem. The telephone numbers are sourced from a data pooling group that collects names and address from telephone directories, national surveys, marketing promotions and a wide range of other sources which cover both landlines and mobile phone numbers. The data pooling group confirmed that numbers are connected via a ping process and disconnected numbers are removed. They also apply suppressions such as the So Not Call Register (DNCR) and customer-supplied opt-out data sets. For privacy reasons they supply only phone numbers, postcodes and suburbs. At the interview stage we therefore apply screening questions to ensure that they are in-scope for each survey.

A structured questionnaire suitable for telephone administration was drawn up in consultation with Council, and pilot-tested with a small sub-sample of the population (via test interviews with some 20 people from different regions) to test for question flow and to eliminate any question wording ambiguities. The interviews were then conducted by our experienced team of ISO20252-accredited interviewers, who were briefed and supervised on the study.

3. Summary of the Main Survey Findings

This section of the report provides a summary of the main findings emerging from the study. For a more detailed analysis by population sub-groups, please refer to Section 4.

3.1 The Fit for the Future (FFTF) Findings

3.1.1 Centres of Influence

Majorities of the population venture beyond Palerang Council's borders for major household shopping (78.7%), major food and grocery shopping (75.2%), entertainment (74.1%), healthcare providers (54.2%) and educational activities (53.0%), but with only a minority doing so for minor top-up food and grocery shopping (21.3%).

In all cases, most of those venturing beyond Palerang go no further than Queanbeyan or Canberra. Clearly, Canberra (far more so than Queanbeyan) is the main destination for major household items, healthcare providers, entertainment and education, whereas more people do their major and top-up food and grocery shopping in Queanbeyan than in Canberra.

Table 1: Centres of Influence

	Major food and grocery shopping %	Major h'hold items shopping %	Minor top-up food & groceries %	Healthcare providers %	Entertainment %	Education %
Q.A In which city or town do your weekly or major food, grocery or major supermarket shopping?						
Q.B Where do you shop for major household items such as whitegoods and furniture?						
Q.C Where do you mostly visit for minor top-up food and grocery shopping?						
Q.D In which city or town are your main healthcare providers located, such as your doctor, dentist and the like?						
Q.E Which city or town do you usually visit for entertainment?						
Q.F Which city or town do you mostly associate with the provision of primary, secondary or tertiary education for your family?						
Canberra only or mainly	15.2	48.3	8.0	38.9	56.3	29.9
Canberra and Queanbeyan about equally	9.4	12.1	0.0	2.1	1.9	2.9
Queanbeyan only or mainly	44.8	15.1	12.9	9.0	7.8	14.8
Total Canberra and/or Queanbeyan	69.4	75.5	20.9	50.0	66.0	47.6
Goulburn + nearby towns	3.6	2.5	0.4	1.8	2.5	3.6
Batemans Bay + nearby towns	2.2	0.7	0.0	0.7	1.9	0.4
Further afield (incl Sydney)	0.0	0.0	0.0	1.7	3.7	1.4
Total beyond Palerang	75.2	78.7	21.3	54.2	74.1	53.0
Braidwood [town]	18.4	13.7	31.8	27.1	5.8	12.7
Bungendore [town]	4.6	0.4	45.1	18.0	6.4	7.6
Captains Flat [town]	0.0	0.0	0.0	0.0	0.0	0.7
Sutton [area]	0.0	0.0	0.0	0.0	0.0	0.2
Not applicable/ don't do that/ unsure	1.8	5.6	1.8	0.4	13.7	25.8

3.1.2 Amalgamation

More than half the population (54.8%) would like Palerang to continue as an independent council in its own right, three in ten (31.9%) want it to amalgamate with Queanbeyan (20.5%), Goulburn (8.6%), Yass (0.4%) or some other council (1.4%), while less than one in ten (8.3%) would like to see it split up among adjoining councils, with 6.0% unsure.

Table 2: Amalgamate or not

Q.G As you may know, the State Government is seeking to amalgamate various councils throughout NSW, and it has been suggested that Palerang Council be merged with Queanbeyan City Council. In your opinion, should Palerang Council:

READ OUT/ ROTATE	Total %	Area of:		
		Braidwood	Bungendore	Captains Flat
Continue as an independent council in its own right	54.8	62.7	51.2	57.1
Amalgamate with Queanbeyan Council	20.5	17.3	20.9	28.6
Amalgamate with Goulburn Council	8.6	9.3	9.3	0.0
Amalgamate with Yass Valley Council	0.4	0.0	0.6	0.0
Amalgamate with some other Council/s	1.4	1.3	1.1	4.8
Be split up among adjoining Councils	8.3	5.3	9.4	9.5
Unsure	6.0	4.0	7.6	0.0

Table 3: Reasons for responses

	n
Why continue as an independent council in its own right [54.8% gave this response]	600
City council wouldn't understand rural needs/chalk and cheese/mismatch	123
Current council good enough/anything else worse/if it ain't broke, don't try to fix it	99
We become junior partner/lose priority/lose our identity/fewer services/poor cousin	89
Bigger is not better/more bureaucratic/more impersonal/less friendly	71
Less control over who represents us/loss of local representation	57
Less money/fewer services per household/more wasted on grandiose projects	56
More expensive/higher rates	27
We would inherit their debt/be worse off	26
Already amalgamated five years ago with negative consequences/don't repeat	22
Major local job losses/current council staff would lose jobs	17
Other councils poorly managed/not as good/politicised	14
Why amalgamate with Queanbeyan Council [20.5% gave this response]	225
Closest to us/our area/already our major local centre/we shop there anyway	76
Queanbeyan more efficient/progressive/modern/better managed/forward thinking	45
Would do more for us than Palerang/more resources	26
Would provide more rates per hectare overall so we benefit/more funds available to us	21
More/better services	15
Better deal for towns and villages other than Bungendore/put Bungendore in its place	15
Easier/more efficient land zoning and controls	12
Reduced rates/prices/fees	8
More like us than Goulburn/more connections	7
Why amalgamate with Goulburn Council [8.6% gave this response]	95
Rural oriented like us/better match/more compatible than Queanbeyan	45
Goulburn well-managed/efficient	15
Has similar history/heritage values	15
Would be more generous than others/more money	11
Better services	9
Why amalgamate with Yass Valley Council [0.4% gave this response]	4
Yass is rural like us/We have more in common with them/Less likely to ignore us/stronger voice	4
Why amalgamate with some other Council [1.4% gave this response]	15
Eurobodalla the main council mentioned, mainly because it is a similar collection of towns	15
Why be split up among adjoining Councils [8.3% gave this response]	91
Palerang has disparate communities/previous amalgamation didn't work as artificial mix/heterogeneous	41
Join like with like so that all towns and villages benefit and none get ignored	26
Shire too big as is/better to add bits to nearby councils rather than add whole shire to one council	24
Why unsure [6.0% gave this response]	66
Insufficient information/advice to make decision	66

3.2 The Local Environment Plan

- At the beginning of the survey, people were asked to describe what they felt to be the good things, and not so good things, about living where they do.

Table 4:

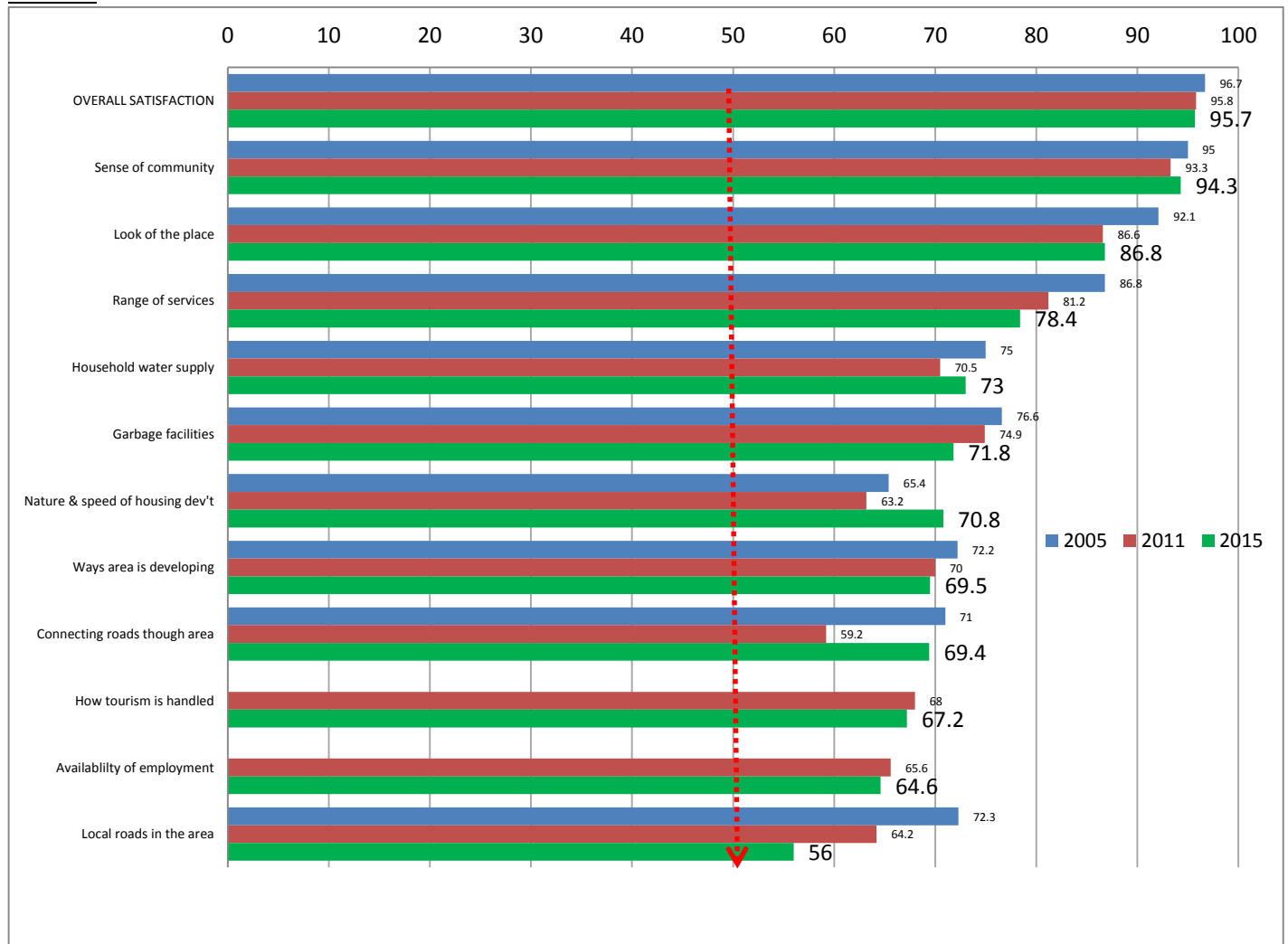
What people feel are the <u>good things</u> about living in the area: (Unaided mentions)	2005 %	2011 %	2015 %	What people feel are the <u>not so good things</u> about living in the area: (Unaided mentions)	2005 %	2011 %	2015 %
Wide open spaces/fields/countryside	46.3	70.1	69.6	Roads/poor upkeep/potholed	18.7	33.4	32.9
Quiet/peaceful	54.5	59.0	58.9	Poor public transport	10.5	14.9	15.7
Sense of community/ friendly people	28.9	50.2	49.4	High prices	3.8	10.5	10.4
Close to Canberra	16.8	36.5	35.3	Dangerous drivers/road rage	1.6	9.7	9.8
Fresh air/unpolluted	23.6	23.0	23.1	Inadequate garbage collection	2.5	7.4	7.2
Close to other places (Sydney, Coast, Melbourne, etc)	8.3	17.9	17.3	Growing too fast/too many new homes	8.0	7.6	6.8
Close to Queanbeyan	4.4	10.5	10.1	Lack of variety of shopping	6.3	6.0	6.2
Heritage aspects	0	7.3	7.9	Not enough to do/too quiet	2.8	5.2	4.4
Good shopping opportunities	1.1	5.6	4.5	Inadequate household recycling service	1.8	3.4	2.8
Easy to move around/ Good roads	0	5.5	6.2	Untidy/ graffiti	0	2.2	2.5
Good climate/ four seasons	6.9	5.3	6.0	Over-regulated/too many rules	0.7	2.0	2.0
Safe for children	4.9	5.2	8.5	People not friendly (anymore)	0.2	2.0	2.8
Good schools/ educational opportunities	1.8	5.2	5.1	Not growing fast enough	0	1.6	2.1
Less traffic congestion	3.0	5.1	5.0	Extremes of seasons	7.8	1.3	2.0
Less crime	1.9	4.0	4.3	Drugs/lack of policing	0.9	1.2	1.1
Entertainment/ arts/ culture	0	4.0	4.1	Inadequate schools	1.6	0	4.1
Well planned/well laid out	1.1	1.9	1.6		0	0	0
Tidy/ neat/ clean	0	1.3	1.3		0	0	0
All other minor mentions	3.9	5.1	5.0	All other minor mentions	44.9	38.2	36.8
TOTAL mentions of good things	207.4	322.7	323.2	TOTAL mentions of not so good things	112.1	146.6	149.6
NET people mentioning any good things	97.0	99.7	99.8	NET people mentioning any not so good things	75.5	85.8	85.0
No good things mentioned	3.0	0.3	0.2	No not so good things mentioned	24.5	14.2	15.0

- As in 2005 and 2011, the top six positive mentions in 2011 were: the wide open spaces/ fields/ countryside (69.6%), being quiet/ peaceful (58.9%), a sense of community/ friendly people (49.4%), being close to Canberra (35.3%), the fresh air/ unpolluted atmosphere (23.1%) and being close to other places (Sydney, Coast, Melbourne, etc) (17.3%) (See Table 4).
- The top six not-so-positive mentions in 2015 were the roads (poor upkeep, potholed) 32.9%, poor public transport (15.7%), high prices (10.4%), dangerous drivers/ road rage (9.8%), inadequate garbage collection (7.2% and growing too fast/ too many new homes (6.8%) (See Table 4).
- Once prompted, almost everyone (95.7% vs 95.8% in 2011 and 96.7% in 2005) is at least quite satisfied overall with their town or village or area as a place to live, with three in four being at least very satisfied (75.2% in 2015 vs 70.5% in 2011 and 75.2% in 2005) (See Table 5).
- All eleven specific satisfaction measures examined in 2011 also emerged on the positive side of the ledger. Interestingly, in 2015 there has been a marked improvement since 2011 in terms of connecting roads through the area (69.4% vs 59.2%). (See Table 5 and Chart 1)

Table 5:

		Not at all satisfied %	Not very satisfied %	Quite satisfied %	Very satisfied %	Completely satisfied %	Total C+V+Q %	Mean N
Overall satisfaction with this town/village/area as a place to live	2015	0.7	3.6	15.8	35.6	44.3	95.7	4.2
	2011	0.2	4.1	25.3	44.5	26.0	95.8	3.9
	2005	1.7	1.6	21.5	38.8	36.4	96.7	4.1
The sense of community (groups, networks) in the area (community groups/support networks)	2015	1.0	4.8	23.6	41.5	29.2	94.3	3.9
	2011	1.2	5.5	33.6	40.3	19.4	93.3	3.7
	2005	1.0	4.1	24.9	37.9	32.2	95.0	4.0
The 'look' (or appearance) of the place	2015	1.3	11.9	46.7	30.6	9.5	86.8	3.4
	2011	0.9	12.4	45.3	32.6	8.7	86.6	3.4
	2005	1.7	6.3	21.2	40.9	30.0	92.1	3.9
The range of services available to the community	2015	8.3	13.3	35.8	30.3	12.3	78.4	3.3
	2011	3.3	15.4	47.8	28.7	4.7	81.2	3.2
	2005	3.5	9.7	42.3	31.8	12.7	86.8	3.4
The household water supply in the area (NB. Asked only in Braidwood, Bungendore and Captain's Flat)	2015	7.7	19.3	46.9	12.9	13.2	73.0	3.0
	2011	8.5	21.0	46.8	12.5	11.2	70.5	3.0
	2005	12.8	12.3	29.7	23.3	22.0	75.0	3.3
The garbage tip facilities now available in the area (NB. In Captain's Flat, we asked 'transfer station' in place of 'garbage tip facilities')	2015	12.5	15.7	34.8	19.3	17.7	71.8	3.1
	2011	9.3	15.8	38.1	20.9	15.9	74.9	3.2
	2005	12.9	10.6	32.1	32.1	12.4	76.6	3.2
The nature and speed of housing development in the area	2015	15.0	14.3	28.8	26.2	15.8	70.8	3.1
	2011	7.7	29.0	42.8	13.7	6.7	63.2	2.8
	2005	14.0	20.6	36.2	16.3	12.9	65.4	2.9
The ways in which your area is developing	2015	12.6	17.9	28.1	31.0	10.4	69.5	3.2
	2011	7.2	22.8	45.8	17.5	6.7	70.0	2.9
	2005	12.0	15.7	36.3	25.6	10.3	72.2	3.1
The connecting roads through the area (main roads)	2015	13.4	17.3	27.2	29.8	12.4	69.4	3.1
	2011	9.9	30.8	35.6	15.5	8.1	59.2	2.8
	2005	10.7	18.2	24.7	30.5	15.8	71.0	3.2
How tourism is being handled in the Council area	2015	8.9	23.9	50.0	13.8	3.4	67.2	2.8
	2011	8.3	23.8	51.2	14.3	2.5	68.0	2.8
	2005	na						
The availability of employment/jobs in the Council area	2015	7.2	28.7	49.6	11.2	3.8	64.6	2.7
	2011	6.1	28.3	52.3	10.2	3.1	65.6	2.8
	2005	na						
The local roads in the area	2015	12.5	23.6	28.2	26.3	9.6	64.1	3.0
	2011	7.4	28.3	46.0	13.8	4.4	64.2	2.8
	2005	8.7	19.0	32.7	29.7	9.9	72.3	3.1

Chart 1



- Just over half of the people would like to see the population of the area stay the same size (51.8% in 2015 vs 53.0% in 2011 and 51.1% in 2005) or even decrease (2.5% vs 1.5% vs 1.4% in 2005) over the next 20 years, with only around four in ten opting for an increase in the population (44.4% in 2015 vs 43.3% in 2011 and 40.5% in 2005). (See Tables 6).

Table 6:

Over the next 20 years, the population should:	2005 %	2011 %	2015 %
More than triple in size	2.3	2.9	3.2
Triple in size	2.3	1.4	1.1
Double in size	9.4	14.9	16.5
Increase by half	26.5	24.1	23.2
TOTAL in favour of an increase in population	40.5	43.3	44.4
Stay the same size	51.1	53.0	51.8
Decrease in size	1.4	1.5	2.5
Unsure	7.0	2.2	1.8

- Although continuing to decline, a vast majority (82.2% in 2015 vs 84.4% in 2011 and 87.3% in 2005) would like to see the character of their area stay the same in the future, with only around one in seven (17.8% vs 15.6% vs 12.7% in 2005) wishing for a change. (See Tables 7).

Table 7:

The future character of the area should:	2005 %	2011 %	2015 %
Remain about the same	87.3	84.4	82.2
Change	12.7	15.6	17.8

- Majorities maintain that smaller block sizes detract from the character of the area (61.5% in 2015 vs 64.3% in 2011), that medium density developments detract from the character of the area (56.8% in 2015 vs 58.5% in 2011). (See Tables 8 and 9).

Table 8:

Q. [ASK ALL] Block sizes in newer housing estates are generally a bit smaller than in older estates. Do these smaller block sizes improve or detract from the character of the area, or does the character of the area remain the same?	2011 %	2015 %
Improve	5.4	5.4
Remain about the same	30.3	33.2
Detract from	64.3	61.5

Table 9:

Q. [ASK ALL] In some towns medium density developments including town houses and duplexes have been taking place. Do these medium density developments improve or detract from the character of the area, or does the character of the area remain the same? IF IMPROVE/DETRACT, PROBE: In what ways do the medium density developments improve/detract from the character of the area?	2011 %	2015 %
Improve	12.0	12.6
Remain about the same	29.5	30.6
Detract from	58.5	56.8

3.3 Council's Management Plan

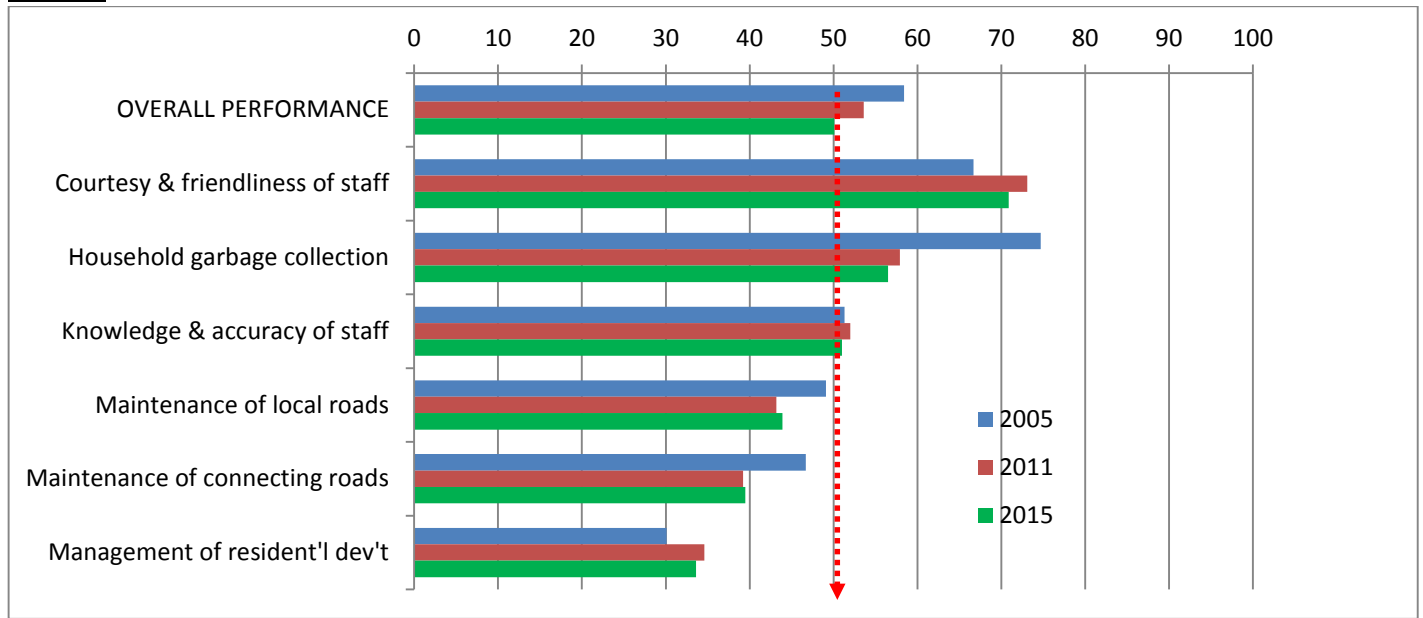
- To assist Council in developing its management plan, the survey measured community perceptions of Council's performance overall, and in terms of six specific aspects. (See Tables 10 and Chart 2).
- Overall, the Council emerges on the positive side of the ledger, with just over half (50.1% in 2015 vs 53.6% in 2011 and 58.4% in 2005) scoring its overall performance positively (ie, scoring it 6 or above on a 1 to 10 scale where 10 is excellent and 1 is terrible).

Table 10:

		Terrible								Excellent			6-10 %	Mean N
		↓ 1 %	2 %	3 %	4 %	5 %	6 %	7 %	8 %	9 %	↓ 10 %			
The overall performance of Palerang Council as a whole	2015	3.2	9.6	9.0	9.9	18.1	12.5	18.8	13.1	2.8	2.9	50.1	5.4	
	2011	1.1	4.2	6.4	9.4	25.2	17.7	20.7	12.2	1.3	1.7	53.6	5.7	
	2005	1.6	1.5	4.5	2.3	31.8	13.3	25.9	16.7	0.8	1.7	58.4	6.0	
The courtesy and helpfulness of council staff	2015	2.0	1.3	2.9	3.8	19.2	9.7	17.4	23.8	9.3	10.7	70.9	6.9	
	2011	0.9	1.0	2.6	3.5	18.7	10.6	18.6	25.0	9.4	9.5	73.1	6.9	
	2005	3.3	1.2	1.1	2.2	25.4	11.4	17.6	24.3	5.5	7.9	66.7	6.6	
The household garbage collection in some areas	2015	15.2	2.5	3.4	4.5	17.8	7.9	10.3	20.2	5.1	13.0	56.5	5.9	
	2011	11.1	2.6	3.5	3.6	21.3	8.9	11.4	20.4	5.3	11.9	57.9	6.1	
	2005	1.4	2.9	5.4	3.8	11.8	6.0	11.4	20.7	9.6	27.0	74.7	7.3	
The knowledge and accuracy of council staff	2015	2.9	2.5	7.0	8.9	27.8	10.4	11.7	17.8	4.9	6.2	51.0	6.0	
	2011	1.7	2.8	6.1	8.8	28.6	10.7	14.0	17.5	4.7	5.1	52.0	5.7	
	2005	3.5	1.9	3.0	8.9	31.4	14.0	16.8	14.8	2.1	3.6	51.3	5.8	
The maintenance of roads in towns and villages	2015	8.2	5.3	8.3	11.0	23.2	14.7	15.1	10.8	2.8	0.5	43.9	5.1	
	2011	6.9	4.5	8.0	10.8	26.5	14.2	16.6	9.5	2.4	0.5	43.2	5.2	
	2005	5.3	5.1	5.1	10.0	25.3	12.7	17.9	13.9	2.7	1.9	49.1	5.5	
The maintenance of connecting roads in their care	2015	7.0	6.2	5.4	13.7	28.1	15.8	11.7	6.9	3.2	1.9	39.5	5.1	
	2011	5.0	5.9	4.6	15.1	30.2	16.1	12.4	6.4	2.9	1.4	39.2	5.3	
	2005	3.2	4.5	6.1	11.6	25.1	13.7	15.4	14.5	1.4	1.7	46.7	5.5	
The management of residential development within the area in recent years	2015	11.2	8.4	9.7	13.5	23.6	10.0	10.3	9.1	2.5	1.7	33.6	4.7	
	2011	8.2	7.3	9.0	14.5	26.4	11.4	11.5	8.3	2.4	1.0	34.6	4.9	
	2005	8.2	6.4	9.7	13.5	32.1	11.5	9.4	7.0	0.2	2.0	30.1	4.8	

- While Council's performance is thought to have improved since 2005 in terms of the courtesy and friendliness of the, the knowledge and accuracy of staff and the management of residential development, it has fallen in terms of household garbage collection and the maintenance of connecting roads and local roads (See Table 10 and Chart 2).

Chart 2



- Close to a majority (44.8% in 2015 vs 47.3% in 2011 and 53.1% in 2005) claims to be well-informed about the overall activities and initiatives of the Council, and in a new question in 2005, over four in ten (44.9% in 2015 vs 44.8% in 2011) give Council a score of six or more out of ten in terms of how well the Council consults and engages with the community. (See Tables 11 and 12).

Table 11:

How well informed about the overall activities and initiatives of the council:	2005 %	2011 %	2015 %
10 - Totally well-informed	1.1	1.6	2.5
9	4.5	3.5	4.1
8	12.5	12.6	12.1
7	19.3	16.6	15.2
6	15.7	13.0	10.9
Total scoring 6 and above	53.1	47.3	44.8
5	24.4	29.8	28.7
4	9.4	8.7	9.0
3	6.7	7.4	7.9
2	2.2	3.6	5.6
1 - Not informed at all	4.3	3.1	3.9
Mean	5.7	5.5	5.5

Table 12:

How well the Council consults and engages with the community:	2011 %	2015 %
10 - Totally consults and engages	2.1	3.3
9	2.9	3.3
8	10.0	10.8
7	13.1	13.4
6	16.7	14.1
Total scoring 6 and above	44.8	44.9
5	24.8	20.6
4	9.5	9.1
3	10.6	11.9
2	4.9	6.2
1 – Doesn't consult and engage at all	5.3	7.2
Mean	5.3	5.2

- Most people currently claim to obtain information from Council from items in their local newspaper (88.9%) and/or newsletters (61.7%), followed at some distance by the Council website (32.1%) and announcements on local radio stations (15.5%). However, in terms of the order in which they would prefer to receive information from Council, more would like to receive it from newsletters (80.2%) than from local newspapers (79.6%) (See Table 13).

Table 13:

Obtaining information from Council 2015:	Currently obtain information from Council %	Prefer to obtain information from Council %
Newsletters (web/emailed)	61.7	80.2
Articles, notices or ads in your local newspaper	88.9	79.6
The Council website (www.Palerang.nsw.gov.au)	32.1	40.5
Announcements on local radio stations	15.5	26.5
Television	13.2	22.4
Articles, notices or ads in the Canberra Times	9.4	11.4
Social media, eg, Twitter, Facebook, YouTube, etc	1.0	5.3
Total responses	221.8	265.9
None of these	0.2	1.6

- Since the last survey Council has issued frequent emailed newsletters in place of quarterly mailed newsletters. Figures for the new format are very similar to those for the old newsletter. Around two-thirds claim to have looked at Council's emailed newsletter (65.6% vs 64.6% in 2011), of whom two-thirds (65.9% vs 67.6% in 2011) regarded it as excellent, very good or good (See Tables 14 and 15).

Table 14

Q. 2011 [ASK ALL] (As you may know) in recent years Council has distributed a quarterly newsletter to residents. Have you ever looked at this newsletter?		
Q. 2015 [ASK ALL] (As you may know) in recent years Council has featured news on its website homepage and you can subscribe there to an emailed newsletter. Have you ever looked at this newsletter?	2011 %	2015 %
Yes	64.6	65.6
No	31.5	31.0
Unsure	4.0	3.5

Table 15

Q. In general, what did you think of the newsletter in terms of the kinds of information it provided...did you think its coverage was excellent, very good, good, fair or poor?	2011 %	2015 %
<i>Among those who had looked into newsletter:</i>		
Excellent	4.3	4.1
Very good	19.6	20.7
Good	43.7	41.1
Fair	19.1	19.8
Poor	6.3	8.2
Unsure	7.0	6.1
Total good = EG+VG+G	67.6	65.9

3.4 Bungendore and Braidwood Options

- Among Bungendore residents, the perceived importance levels of establishing the viability of the water supply, restricting development on floodplains and upgrading of the sewerage treatment works are all high and similar to 2011. (See Table 16).

Table 16

Perceived importance of various priorities:	Establishing the viability of the water supply. %			Restricting development on floodplains. %			Upgrading of the sewerage treatment works %		
	2005	2011	2015	2005	2011	2015	2005	2011	2015
<i>Among Bungendore residents:</i>									
Extremely important	27.7	59.4	58.8	21.5	45.7	46.7	14.4	27.2	28.0
Very important	62.1	34.9	35.0	48.2	27.7	24.9	55.4	35.8	35.3
Quite important	10.3	5.2	5.0	26.2	21.1	22.7	25.6	27.0	26.3
Not very important	0.0	0.0	0.0	2.1	4.5	4.8	2.1	4.8	7.2
Not important at all	0.0	0.5	1.2	2.1	0.9	0.9	2.6	3.3	3.2
Total E+V imp't	89.8	94.3	93.8	69.7	73.4	71.6	69.8	63.0	63.3
Total E+V+Q imp't	100.0	99.5	98.8	95.9	94.6	94.3	95.4	91.9	89.6
Mean	4.2	4.5	4.5	3.9	4.1	4.1	3.8	3.8	3.8

- Majorities of Bungendore and Braidwood residents both continue to regard the building of a traffic bypass around their respective towns to be at least quite important. (See Tables 17).

Table 17

Perceived importance of bypassing traffic to the East of Bungendore:	Among Bungendore residents %			Among Braidwood residents %	
	2005	2011	2015	2011	2015
Extremely important	9.2	16.3	15.7	18.0	15.0
Very important	24.6	18.6	20.6	15.1	18.3
Quite important	43.1	22.4	22.1	25.3	24.4
Not very important	13.3	16.0	14.8	10.2	11.9
Not important at all	9.7	26.7	26.8	31.4	30.4
Total E+V imp't	33.8	34.9	36.3	33.1	33.3
Total E+V+Q imp't	76.9	57.3	58.4	58.4	57.7
Mean	3.1	2.8	2.8	2.8	2.8

4. Detailed Tabular Results

Table 1a:

Q.1 [ASK ALL] Now thinking specifically about the area where you live, what do you feel are all the GOOD things about living in this area? ... What do you most like about living here? [PROBE FULLY]

	Total %	Town of and Area around:			Age			Sex	
		Braidwood	Bungendore	Captains Flat	18-39 years	40-54 years	55+ years	Men	Women
Good schools/ educational opportunities	5.1	6.0	4.6	5.7	25.4	3.9	1.8	4.3	5.7
Close to Canberra	35.3	38.6	34.3	29.5	28.3	41.6	32.4	30.7	38.1
Close to Queanbeyan	10.1	10.3	10.5	5.8	11.7	9.2	10.5	8.5	11.1
Close to other places (eg, Sydney, coastal beaches, Melbourne)	17.3	23.9	13.6	21.3	15.5	19.7	16.0	15.9	18.2
Easy to move around/ good roads/ great networks of roads	6.2	5.9	6.8	1.8	6.9	3.6	7.9	6.6	5.9
Entertainment/ arts/ culture/ movies	4.1	4.4	4.0	2.8	1.2	1.9	6.1	2.1	5.3
Fresh air/ unpolluted atmosphere/ healthy air	23.1	20.7	25.2	15.5	16.7	15.1	29.9	26.9	20.8
Good climate/ four distinct seasons	6.0	8.8	5.0	2.8	3.6	4.7	7.4	9.0	4.2
Good shopping centre/ opportunities	4.5	2.5	6.0	0.9	5.7	5.1	3.9	4.1	4.9
Wide open spaces/ rural atmosphere/ green/ countryside	69.6	65.4	71.7	69.5	56.8	74.5	68.9	68.0	70.7
Less crime/ low crime rate	4.3	3.6	4.3	7.3	2.7	4.4	4.6	4.6	4.1
Less traffic congestion/ hardly any peak hour	5.0	3.9	5.6	5.1	0.0	3.8	6.9	4.9	5.1
Lower cost of living/ cheaper than city living	1.7	0.0	2.1	6.2	0.0	2.3	1.7	3.4	0.7
Quiet/ peaceful/ not hectic	58.9	54.0	61.8	54.3	53.0	62.1	57.9	62.4	56.8
Safe for children	8.5	5.1	10.2	8.1	20.3	11.7	3.8	7.0	9.4
Sense of community/ friendly people/ community feeling	49.4	55.6	46.4	48.0	71.1	45.8	47.4	51.0	48.3
Tidy/ neat/ clean	1.3	2.2	0.9	0.0	0.0	1.3	1.5	0.9	1.5
Well planned/ well laid out	1.6	0.3	2.3	0.9	0.9	1.9	1.5	0.6	2.2
Heritage aspects	7.9	11.5	5.8	11.0	0.9	6.1	10.5	8.7	7.4
Other (Specify)	5.0	5.9	4.3	5.1	3.9	5.8	5.0	4.5	5.5
No good things/ unsure	0.2	0.0	0.2	0.9	0.0	0.5	0.0	0.0	0.3

Table 1b:

<i>Caution: Small base sizes.</i>	Total %	Town of Braidwood %	Town of Bungendore %	Town of Captains Flat %	Villages %	Rural Resid'l %	Farms %
Good schools/ educational opportunities	5.1	5.7	5.1	5.7	5.1	4.4	6.1
Close to Canberra	35.3	42.1	27.1	29.5	47.3	36.3	37.4
Close to Queanbeyan	10.1	4.3	9.2	5.8	14.2	10.7	12.3
Close to other places (eg, Sydney, coastal beaches, Melbourne)	17.3	35.7	10.3	21.3	9.4	16.0	20.2
Easy to move around/ good roads/ great networks of roads	6.2	12.0	9.3	1.8	9.3	5.2	3.9
Entertainment/ arts/ culture/ movies	4.1	11.4	9.7	2.8	0.0	1.6	2.2
Fresh air/ unpolluted atmosphere/ healthy air	23.1	30.7	30.0	15.5	26.6	22.3	17.4
Good climate/ four distinct seasons	6.0	6.1	4.1	2.8	5.3	5.5	9.7
Good shopping centre/ opportunities	4.5	0.0	13.8	0.9	1.2	2.4	3.3
Wide open spaces/ rural atmosphere/ green/ countryside	69.6	62.6	69.8	69.5	76.3	72.1	66.3
Less crime/ low crime rate	4.3	9.5	3.6	7.3	1.8	5.1	1.7
Less traffic congestion/ hardly any peak hour	5.0	2.8	4.6	5.1	4.8	6.3	4.2
Lower cost of living/ cheaper than city living	1.7	0.0	1.9	6.2	0.0	2.5	0.0
Quiet/ peaceful/ not hectic	58.9	32.9	67.6	54.3	59.9	59.0	60.8
Safe for children	8.5	5.6	15.1	8.1	3.8	8.5	5.0
Sense of community/ friendly people/ community feeling	49.4	81.5	52.9	48.0	45.9	43.1	47.3
Tidy/ neat/ clean	1.3	4.7	0.6	0.0	1.8	1.0	1.4
Well planned/ well laid out	1.6	1.3	2.4	0.9	4.2	1.9	0.0
Heritage aspects	7.9	18.9	5.5	11.0	4.4	6.1	9.1
Other (Specify)	20.1	18.5	17.4	19.5	16.4	18.4	26.6
No good things/ unsure	0.2	0.0	0.0	0.9	0.0	0.4	0.0

Table 2a:

Q.2 [ASK ALL] And what if anything do you feel are the NOT SO GOOD things about living in this area? ... What needs to be improved about living here? [PROBE FULLY]

	Total %	Town of and Area around:			Age			Sex	
		Braidwood	Bungendore	Captains Flat	18-39 years	40-54 years	55+ years	Men	Women
Extremes of seasons/ summer too hot/ winter too cold	2.0	0.7	2.9	0.0	0.0	0.0	3.9	4.1	0.8
High prices (eg, petrol, air fares, tip fees, bus fares, etc)	10.4	16.3	7.2	13.0	8.3	8.2	12.3	11.4	9.8
Growing too fast/ too many new houses	6.8	4.0	8.4	5.1	6.6	6.2	7.2	7.8	6.2
Not growing fast enough/ stagnating/ dying	2.1	4.6	0.9	1.8	1.5	0.0	3.6	2.1	2.0
Lack of variety of shopping	6.2	3.8	7.2	8.3	7.0	7.2	5.4	7.6	5.3
Not enough to do/ too quiet/ boredom	4.4	5.7	4.0	3.0	6.3	7.5	1.9	2.6	5.6
Over-regulated/ too many rules	2.0	1.2	2.3	2.3	1.8	0.0	3.4	2.9	1.4
People not friendly (anymore)/ no community feeling	2.8	3.9	2.1	4.3	0.0	0.0	5.4	2.7	2.9
Public transport/ none/ not often enough/ unreliable	15.7	13.2	16.8	17.4	10.7	13.7	18.2	17.1	14.9
Inadequate schools	4.1	3.6	4.3	4.8	0.0	7.3	2.8	1.8	5.6
Roads/ poor upkeep/ potholed	32.9	28.4	33.8	44.3	27.4	43.4	26.7	29.4	35.0
Too far from Sydney/ Melbourne/ beaches	0.0	0.0	0.0	0.0	0.0	0.0	0.0	0.0	0.0
Untidy/ graffiti/ rubbish everywhere	2.5	2.8	2.6	0.9	2.1	2.8	2.4	2.5	2.5
Dangerous drivers/ road rage	9.8	11.3	9.5	6.5	10.2	6.9	11.8	7.7	11.1
Drugs/ lack of policing	1.1	1.0	1.2	0.0	0.0	1.6	1.0	1.3	0.9
Garbage collection/ none/ infrequent/ unreliable	7.2	6.9	7.6	4.4	4.6	7.8	7.3	7.0	7.3
Household recycling service/ none/ infrequent/ unreliable	2.8	3.0	2.8	3.0	1.8	3.9	2.3	2.7	3.0
Other (Specify)	36.8	38.3	35.6	40.9	35.5	41.2	34.1	37.0	36.7
No not so good things/ unsure	15.0	19.3	13.9	5.8	22.6	12.5	15.1	17.6	13.3

Table 2b:

<i>Caution: Small base sizes.</i>	Total %	Town of Braidwood %	Town of Bungendore %	Town of Captains Flat %	Villages %	Rural Resid'l %	Farms %
Extremes of seasons/ summer too hot/ winter too cold	2.0	2.9	3.9	0.0	5.3	2.1	0.0
High prices (eg, petrol, air fares, tip fees, bus fares, etc)	10.4	30.2	4.5	13.0	3.6	9.1	11.9
Growing too fast/ too many new houses	6.8	0.9	16.3	5.1	1.5	5.1	5.0
Not growing fast enough/ stagnating/ dying	2.1	12.0	0.8	1.8	0.0	1.0	2.2
Lack of variety of shopping	6.2	10.4	12.8	8.3	1.5	5.0	1.6
Not enough to do/ too quiet/ boredom	4.4	16.5	7.1	3.0	2.7	2.5	2.2
Over-regulated/ too many rules	2.0	0.0	3.4	2.3	0.0	2.0	1.6
People not friendly (anymore)/ no community feeling	2.8	0.0	0.7	4.3	0.0	3.2	5.2
Public transport/ none/ not often enough/ unreliable	15.7	26.1	19.7	17.4	18.2	15.0	9.1
Inadequate schools	4.1	0.0	8.1	4.8	2.7	2.5	4.7
Roads/ poor upkeep/ potholed	32.9	26.0	27.4	44.3	38.0	36.6	29.2
Too far from Sydney/ Melbourne/ beaches	0.0	0.0	0.0	0.0	0.0	0.0	0.0
Untidy/ graffiti/ rubbish everywhere	2.5	6.2	5.6	0.9	1.2	1.1	1.7
Dangerous drivers/ road rage	9.8	8.6	14.0	6.5	3.5	7.9	12.2
Drugs/ lack of policing	1.1	0.9	2.6	0.0	1.2	0.5	1.1
Garbage collection/ none/ infrequent/ unreliable	7.2	4.0	0.0	4.4	14.1	10.8	7.9
Household recycling service/ none/ infrequent/ unreliable	2.8	0.0	0.0	3.0	4.1	4.0	3.9
Other (Specify)	46.8	57.7	44.9	50.9	46.1	46.0	45.3
No not so good things/ unsure	15.0	5.0	14.5	5.8	14.0	13.5	23.9

Table 3a:**Q.3 [ASK ALL] Overall, how satisfied are you with this town/village/area as a place to live?**

	Total %	Town of and Area around:			Age			Gender	
		Braidwood	Bungendore	Captains Flat	18-39 years	40-54 years	55+ years	Men	Women
Not satisfied at all	0.7	1.3	0.6	0.0	0.0	1.1	0.8	0.8	0.6
Not very satisfied	3.6	5.3	3.3	0.0	0.0	2.3	6.5	4.2	3.2
Quite satisfied	15.8	17.3	15.3	14.3	18.9	12.8	16.3	20.4	12.3
Very satisfied	35.6	28.0	36.7	52.4	43.0	47.3	23.2	33.4	37.2
Completely satisfied	44.3	48.0	44.1	33.3	38.1	36.5	53.3	41.2	46.7
Mean	4.2	4.2	4.2	4.2	4.2	4.2	4.2	4.1	4.3

Table 3b:

<i>Caution: Small base sizes.</i>	Total %	Town of Braidwood %	Town of Bungendore %	Town of Captains Flat %	Villages %	Rural Resid'l %	Farms %
Not satisfied at all	0.7	1.5	1.0	0.0	0.0	0.0	0.0
Not very satisfied	3.6	3.1	4.0	0.0	6.7	0.0	6.7
Quite satisfied	15.8	16.9	16.6	14.3	20.0	9.9	13.3
Very satisfied	35.6	32.3	42.2	52.4	20.0	39.7	20.0
Completely satisfied	44.3	46.2	36.2	33.3	53.3	50.4	60.0
Mean	4.2	4.2	4.1	4.2	4.2	4.4	4.3

Table 4a:

Q.4 [ASK ALL] In general, how satisfied are you with the following aspects of this town/village/area..... firstly (READ OUT FIRST ASPECT)..... Would you say you are completely satisfied (CS), very satisfied (VS), quite satisfied (QS), not very satisfied (NV) or not at all satisfied (NA) with that aspect?

1. The ways in which your area is developing

	Total %	Town of and Area around:			Age			Gender	
		Braidwood	Bungendore	Captains Flat	18-39 years	40-54 years	55+ years	Men	Women
Not satisfied at all	12.6	6.7	14.4	19.0	4.5	17.4	13.6	15.8	10.3
Not very satisfied	17.9	21.3	15.2	28.6	7.5	19.1	22.6	25.4	12.2
Quite satisfied	28.1	26.7	28.6	28.6	30.9	38.2	19.3	27.1	28.8
Very satisfied	31.0	30.7	32.0	23.8	43.0	19.1	33.1	22.1	37.8
Completely satisfied	10.4	14.7	9.8	0.0	14.0	6.3	11.4	9.7	10.9
Mean	3.1	3.3	3.1	2.6	3.5	2.8	3.1	2.8	3.3

Table 4b:

<i>Caution: Small base sizes.</i>	Total %	Town of Braidwood %	Town of Bungendore %	Town of Captains Flat %	Villages %	Rural Resid'l %	Farms %
Not satisfied at all	12.6	4.6	13.9	19.0	20.0	19.8	6.7
Not very satisfied	17.9	21.5	16.4	28.6	26.7	9.9	6.7
Quite satisfied	28.1	27.7	25.8	28.6	13.3	32.2	46.7
Very satisfied	31.0	29.2	33.7	23.8	33.3	33.1	26.7
Completely satisfied	10.4	16.9	10.2	0.0	6.7	5.0	13.3
Mean	3.1	3.3	3.1	2.6	2.8	2.9	3.3

Table 5a:

Q.4 [ASK ALL] In general, how satisfied are you with the following aspects of this town/village/area..... firstly (READ OUT FIRST ASPECT)..... Would you say you are completely satisfied (CS), very satisfied (VS), quite satisfied (QS), not very satisfied (NV) or not at all satisfied (NA) with that aspect?

2. The 'look' (or appearance) of the place

	Total %	Town of and Area around:			Age			Gender	
		Braidwood	Bungendore	Captains Flat	18-39 years	40-59 years	55+ years	Men	Women
Not at all satisfied	1.3	0.5	1.8	0.0	0.0	0.0	2.5	0.9	1.6
Not very satisfied	11.9	15.1	10.6	9.6	10.1	4.1	17.7	17.4	8.5
Quite satisfied	46.7	41.4	48.1	57.7	27.4	52.3	46.7	47.0	46.4
Very satisfied	30.6	32.8	30.2	24.3	51.4	33.5	24.2	25.9	33.5
Completely satisfied	9.5	10.2	9.3	8.4	11.1	10.1	8.8	8.8	10.0
Mean	3.4	3.4	3.3	3.3	3.6	3.5	3.2	3.2	3.4

Table 5b:

<i>Caution: Small base sizes.</i>	Total %	Town of Braidwood %	Town of Bungendore %	Town of Captains Flat %	Villages %	Rural Resid'l %	Farms %
Not at all satisfied	1.3	2.2	5.6	0.0	0.0	0.0	0.0
Not very satisfied	11.9	11.6	8.2	9.6	15.8	11.1	16.3
Quite satisfied	46.7	57.8	50.9	57.7	37.3	48.0	36.1
Very satisfied	30.6	21.6	27.8	24.3	37.5	30.5	36.4
Completely satisfied	9.5	6.9	7.4	8.4	9.4	10.4	11.3
Mean	3.4	3.2	3.2	3.3	3.4	3.4	3.4

Table 6a:

Q.4 [ASK ALL] In general, how satisfied are you with the following aspects of this town/village/area..... firstly (READ OUT FIRST ASPECT)..... Would you say you are completely satisfied (CS), very satisfied (VS), quite satisfied (QS), not very satisfied (NV) or not at all satisfied (NA) with that aspect?

3. The nature and speed of housing development in the area

	Total %	Town of and Area around:			Age			Gender	
		Braidwood	Bungendore	Captains Flat	18-39 years	40-54 years	55+ years	Men	Women
Not satisfied at all	15.0	10.7	17.4	9.5	4.5	21.7	15.9	19.5	11.6
Not very satisfied	14.3	13.3	14.6	14.3	7.5	19.7	14.0	15.1	13.6
Quite satisfied	28.8	30.7	26.4	42.9	36.2	19.7	31.3	31.3	26.9
Very satisfied	26.2	25.3	27.9	14.3	34.7	25.9	21.7	21.2	29.9
Completely satisfied	15.8	20.0	13.7	19.0	17.0	13.1	17.1	12.8	18.0
Mean	3.1	3.3	3.1	3.2	3.5	2.9	3.1	2.9	3.3

Table 6b:

<i>Caution: Small base sizes.</i>	Total %	Town of Braidwood %	Town of Bungendore %	Town of Captains Flat %	Villages %	Rural Resid'l %	Farms %
Not satisfied at all	15.0	6.2	15.6	9.5	13.3	25.6	26.7
Not very satisfied	14.3	15.4	16.4	14.3	6.7	6.6	20.0
Quite satisfied	28.8	35.4	32.5	42.9	20.0	16.5	13.3
Very satisfied	26.2	23.1	21.8	14.3	40.0	41.3	26.7
Completely satisfied	15.8	20.0	13.6	19.0	20.0	9.9	13.3
Mean	3.1	3.4	3.0	3.2	3.5	3.0	2.8

Table 7a:

Q.4 [ASK ALL] In general, how satisfied are you with the following aspects of this town/village/area..... firstly (READ OUT FIRST ASPECT)..... Would you say you are completely satisfied (CS), very satisfied (VS), quite satisfied (QS), not very satisfied (NV) or not at all satisfied (NA) with that aspect?

4. The connecting roads through the area (main roads)

	Total %	Town of and Area around:			Age			Gender	
		Braidwood	Bungendore	Captains Flat	18-39 years	40-54 years	55+ years	Men	Women
Not satisfied at all	13.4	13.3	7.7	61.9	10.6	19.1	10.8	16.0	11.4
Not very satisfied	17.3	9.3	20.4	19.0	18.1	15.7	18.1	20.0	15.3
Quite satisfied	27.2	34.7	26.7	4.8	29.4	27.4	25.8	24.6	29.1
Very satisfied	29.8	32.0	30.7	14.3	24.5	28.2	33.7	29.0	30.4
Completely satisfied	12.4	10.7	14.5	0.0	17.4	9.7	11.6	10.5	13.8
Mean	3.1	3.2	3.2	1.7	3.2	2.9	3.2	3.0	3.2

Table 7b:

<i>Caution: Small base sizes.</i>	Total %	Town of Braidwood %	Town of Bungendore %	Town of Captains Flat %	Villages %	Rural Resid'l %	Farms %
Not satisfied at all	13.4	12.3	6.2	61.9	20.0	5.8	6.7
Not very satisfied	17.3	10.8	18.4	19.0	13.3	14.9	33.3
Quite satisfied	27.2	30.8	31.0	4.8	20.0	23.1	33.3
Very satisfied	29.8	33.8	29.5	14.3	40.0	25.6	26.7
Completely satisfied	12.4	12.3	14.9	0.0	6.7	30.6	0.0
Mean	3.1	3.2	3.3	1.7	3.0	3.6	2.8

Table 8a:

Q.4 [ASK ALL] In general, how satisfied are you with the following aspects of this town/village/area..... firstly (READ OUT FIRST ASPECT)..... Would you say you are completely satisfied (CS), very satisfied (VS), quite satisfied (QS), not very satisfied (NV) or not at all satisfied (NA) with that aspect?

5. The local roads in the area

	Total %	Town of and Area around:			Age			Gender	
		Braidwood	Bungendore	Captains Flat	18-39 years	40-54 years	55+ years	Men	Women
Not satisfied at all	12.5	13.3	8.0	47.6	10.6	16.5	10.6	14.9	10.6
Not very satisfied	23.6	32.0	20.6	19.0	21.1	22.8	25.4	21.8	24.8
Quite satisfied	28.2	37.3	26.0	14.3	25.7	30.8	27.6	23.9	31.3
Very satisfied	26.3	12.0	33.6	14.3	29.8	23.6	26.2	29.4	23.9
Completely satisfied	9.6	5.3	11.9	4.8	12.8	6.3	10.2	9.9	9.3
Mean	3.0	2.6	3.2	2.1	3.1	2.8	3.0	3.0	3.0

Table 8b:

<i>Caution: Small base sizes.</i>	Total %	Town of Braidwood %	Town of Bungendore %	Town of Captains Flat %	Villages %	Rural Resid'l %	Farms %
Not satisfied at all	12.5	15.4	5.0	47.6	20.0	11.6	0.0
Not very satisfied	23.6	27.7	19.4	19.0	26.7	19.0	33.3
Quite satisfied	28.2	36.9	27.3	14.3	13.3	24.8	40.0
Very satisfied	26.3	13.8	34.5	14.3	33.3	26.4	26.7
Completely satisfied	9.6	6.2	13.9	4.8	6.7	18.2	0.0
Mean	3.0	2.7	3.3	2.1	2.8	3.2	2.9

Table 9a:

Q.4 [ASK ALL] In general, how satisfied are you with the following aspects of this town/village/area..... firstly (READ OUT FIRST ASPECT)..... Would you say you are completely satisfied (CS), very satisfied (VS), quite satisfied (QS), not very satisfied (NV) or not at all satisfied (NA) with that aspect?

6. The garbage tip facilities now available in the area [CAPTAIN'S FLAT ONLY: SAY 'transfer station' in place of 'garbage tip facilities']

	Total %	Town of and Area around:			Age			Gender	
		Braidwood	Bungendore	Captains Flat	18-39 years	40-59 years	55+ years	Men	Women
Not at all satisfied	12.5	13.9	11.2	17.2	0.0	12.5	14.9	13.5	11.9
Not very satisfied	15.7	14.9	15.8	18.0	16.8	16.1	15.3	9.3	19.6
Quite satisfied	34.8	32.6	34.8	44.4	25.1	39.8	33.2	35.9	34.1
Very satisfied	19.3	20.2	19.9	10.2	21.9	18.7	19.1	21.0	18.2
Completely satisfied	17.7	18.4	18.3	10.2	36.2	12.8	17.5	20.3	16.2
Mean	3.1	3.1	3.2	2.8	3.8	3.0	3.1	3.3	3.1

Table 9b:

<i>Caution: Small base sizes.</i>	Total %	Town of Braidwood %	Town of Bungendore %	Town of Captains Flat %	Villages %	Rural Resid'l %	Farms %
Not at all satisfied	12.5	0.0	5.2	17.2	13.6	14.2	18.6
Not very satisfied	15.7	12.9	6.3	18.0	24.1	19.8	15.6
Quite satisfied	34.8	46.2	34.4	44.4	31.7	35.4	27.9
Very satisfied	19.3	22.0	33.2	10.2	11.2	13.9	19.6
Completely satisfied	17.7	18.9	20.9	10.2	19.4	16.6	18.3
Mean	3.1	3.5	3.6	2.8	3.0	3.0	3.0

Table 10a:

Q.4 [ASK ALL] In general, how satisfied are you with the following aspects of this town/village/area..... firstly (READ OUT FIRST ASPECT)..... Would you say you are completely satisfied (CS), very satisfied (VS), quite satisfied (QS), not very satisfied (NV) or not at all satisfied (NA) with that aspect?

7. The sense of community (groups, networks) in the area (community groups/support networks)

	Total %	Town of and Area around:			Age			Gender	
		Braidwood	Bungendore	Captains Flat	18-39 years	40-54 years	55+ years	Men	Women
Not satisfied at all	1.0	1.3	0.4	4.8	0.0	0.9	1.6	0.8	1.1
Not very satisfied	4.8	2.7	5.7	4.8	3.4	4.6	5.7	6.1	3.8
Quite satisfied	23.6	20.0	24.4	28.6	14.7	26.5	26.2	30.5	18.4
Very satisfied	41.5	44.0	39.8	47.6	46.4	39.9	40.0	45.2	38.8
Completely satisfied	29.2	32.0	29.7	14.3	35.5	28.2	26.4	17.4	38.0
Mean	3.9	4.0	3.9	3.6	4.1	3.9	3.8	3.7	4.1

Table 10b:

<i>Caution: Small base sizes.</i>	Total %	Town of Braidwood %	Town of Bungendore %	Town of Captains Flat %	Villages %	Rural Resid'l %	Farms %
Not satisfied at all	1.0	1.5	0.0	4.8	0.0	2.5	0.0
Not very satisfied	4.8	3.1	6.0	4.8	0.0	7.4	6.7
Quite satisfied	23.6	16.9	18.4	28.6	20.0	52.1	26.7
Very satisfied	41.5	41.5	44.7	47.6	46.7	29.8	33.3
Completely satisfied	29.2	36.9	31.0	14.3	33.3	8.3	33.3
Mean	3.9	4.1	4.0	3.6	4.1	3.3	3.9

Table 11a:

Q.4 [ASK ALL] In general, how satisfied are you with the following aspects of this town/village/area..... firstly (READ OUT FIRST ASPECT)..... Would you say you are completely satisfied (CS), very satisfied (VS), quite satisfied (QS), not very satisfied (NV) or not at all satisfied (NA) with that aspect?

8. The range of services available to the community

	Total %	Town of and Area around:			Age			Gender	
		Braidwood	Bungendore	Captains Flat	18-39 years	40-54 years	55+ years	Men	Women
Not satisfied at all	8.3	6.7	7.7	19.0	3.0	6.8	12.2	12.4	5.2
Not very satisfied	13.3	9.3	13.7	23.8	10.6	18.2	11.2	14.9	12.0
Quite satisfied	35.8	37.3	34.4	42.9	48.7	36.2	28.7	33.4	37.7
Very satisfied	30.3	26.7	34.3	9.5	31.7	33.9	27.0	32.6	28.6
Completely satisfied	12.3	20.0	9.9	4.8	6.0	4.8	20.9	6.7	16.5
Mean	3.3	3.4	3.3	2.6	3.3	3.1	3.3	3.1	3.4

Table 11b:

<i>Caution: Small base sizes.</i>	Total %	Town of Braidwood %	Town of Bungendore %	Town of Captains Flat %	Villages %	Rural Resid'l %	Farms %
Not satisfied at all	8.3	4.6	5.2	19.0	13.3	15.7	6.7
Not very satisfied	13.3	10.8	10.4	23.8	20.0	14.0	13.3
Quite satisfied	35.8	30.8	34.0	42.9	46.7	46.3	26.7
Very satisfied	30.3	30.8	39.2	9.5	6.7	21.5	46.7
Completely satisfied	12.3	23.1	11.2	4.8	13.3	2.5	6.7
Mean	3.3	3.6	3.4	2.6	2.9	2.8	3.3

Table 12a:

Q.4 [ASK ALL] In general, how satisfied are you with the following aspects of this town/village/area..... firstly (READ OUT FIRST ASPECT)..... Would you say you are completely satisfied (CS), very satisfied (VS), quite satisfied (QS), not very satisfied (NV) or not at all satisfied (NA) with that aspect?

9. The availability of employment/jobs in the Council area

	Total %	Town of and Area around:			Age			Gender	
		Braidwood	Bungendore	Captains Flat	18-39 years	40-59 years	55+ years	Men	Women
Not at all satisfied	7.2	6.1	7.8	6.6	5.7	8.3	6.5	10.3	5.3
Not very satisfied	28.7	30.3	28.0	27.6	11.3	29.1	32.1	22.7	32.3
Quite satisfied	49.6	43.8	51.1	60.0	54.2	52.1	46.6	47.5	50.9
Very satisfied	11.2	14.6	10.2	5.8	28.7	9.0	9.1	12.8	10.3
Completely satisfied	3.4	5.2	2.9	0.0	0.0	1.5	5.6	6.8	1.3
Mean	2.7	2.8	2.7	2.7	3.1	2.7	2.8	2.8	2.7

Table 12b:

<i>Caution: Small base sizes.</i>	Total %	Town of Braidwood %	Town of Bungendore %	Town of Captains Flat %	Villages %	Rural Resid'l %	Farms %
Not at all satisfied	7.2	16.7	3.3	6.6	15.0	9.1	1.5
Not very satisfied	28.7	29.3	23.2	27.6	36.1	29.5	30.7
Quite satisfied	49.6	47.4	57.8	60.0	36.5	49.5	42.3
Very satisfied	11.2	6.7	14.8	5.8	4.2	8.6	18.0
Completely satisfied	3.4	0.0	0.8	0.0	8.2	3.3	7.4
Mean	2.7	2.4	2.9	2.7	2.5	2.7	3.0

Table 13a:

Q.4 [ASK ALL] In general, how satisfied are you with the following aspects of this town/village/area..... firstly (READ OUT FIRST ASPECT)..... Would you say you are completely satisfied (CS), very satisfied (VS), quite satisfied (QS), not very satisfied (NV) or not at all satisfied (NA) with that aspect?

10. How tourism is being handled in the Council area

	Total %	Town of and Area around:			Age			Gender	
		Braidwood	Bungendore	Captains Flat	18-39 years	40-59 years	55+ years	Men	Women
Not at all satisfied	8.9	8.6	9.0	8.2	1.9	13.8	7.1	6.9	10.1
Not very satisfied	23.9	24.1	22.7	33.1	30.1	19.5	25.4	28.4	21.0
Quite satisfied	50.0	45.1	52.1	52.1	48.0	52.7	48.7	45.5	52.8
Very satisfied	13.8	16.6	13.4	6.6	16.2	13.3	13.7	12.3	14.8
Completely satisfied	3.4	5.6	2.8	0.0	3.8	0.7	5.1	6.8	1.3
Mean	2.8	2.9	2.8	2.6	2.9	2.7	2.8	2.8	2.8

Table 13b:

<i>Caution: Small base sizes.</i>	Total %	Town of Braidwood %	Town of Bungendore %	Town of Captains Flat %	Villages %	Rural Resid'l %	Farms %
Not at all satisfied	8.9	9.8	4.1	8.2	11.3	11.4	8.3
Not very satisfied	23.9	23.6	20.8	33.1	19.5	24.2	24.3
Quite satisfied	50.0	47.8	55.0	52.1	53.5	50.2	44.2
Very satisfied	13.8	11.3	16.3	6.6	10.9	12.2	18.3
Completely satisfied	3.4	7.7	3.8	0.0	4.8	1.9	4.9
Mean	2.8	2.8	2.9	2.6	2.8	2.7	2.9

Table 14a:

Q.4 [ASK ALL] In general, how satisfied are you with the following aspects of this town/village/area..... firstly (READ OUT FIRST ASPECT)..... Would you say you are completely satisfied (CS), very satisfied (VS), quite satisfied (QS), not very satisfied (NV) or not at all satisfied (NA) with that aspect?

[ASK ONLY IN BRAIDWOOD, BUNGENDORE & CAPTAINS FLAT:]

11. The household water supply in the area

	Total %	Town of and Area around:			Age			Gender	
		Braidwood	Bungendore	Captains Flat	18-39 years	40-59 years	55+ years	Men	Women
Not at all satisfied	7.7	10.4	7.3	2.9	8.0	10.9	5.8	5.5	9.7
Not very satisfied	19.3	26.6	18.3	5.6	14.4	20.5	19.3	18.3	20.1
Quite satisfied	46.9	39.1	48.5	55.4	39.1	33.1	56.3	54.4	40.1
Very satisfied	12.9	12.4	13.1	13.3	24.8	18.2	7.9	11.2	14.5
Completely satisfied	13.2	11.5	12.8	22.8	13.7	17.3	10.6	10.6	15.5
Mean	3.0	2.9	3.1	3.5	3.2	3.1	3.0	3.0	3.1

Table 14b:

<i>Caution: Small base sizes.</i>	Total %	Town of Braidwood %	Town of Bungendore %	Town of Captains Flat %	Villages %	Rural Resid'l %	Farms %
Not at all satisfied	7.7	9.4	6.8	2.9	42.4	6.3	13.4
Not very satisfied	19.3	26.8	23.0	5.6	10.5	9.1	26.1
Quite satisfied	46.9	37.1	44.4	55.4	31.4	58.0	44.7
Very satisfied	12.9	16.8	15.6	13.3	0.0	8.8	0.0
Completely satisfied	13.2	9.9	10.2	22.8	15.8	17.9	15.8
Mean	3.0	2.9	3.0	3.5	2.4	3.2	2.8

Table 15a:**Q.5 In which city or town do your weekly or major food, grocery or major supermarket shopping?**

	Total %	Town of and Area around: %			Age %			Gender %	
		Braidwood	Bungendore	Captains Flat	18-39 years	40-54 years	55+ years	Men	Women
Canberra only or mainly	15.2	7.6	17.6	22.0	18.6	16.1	12.8	14.9	15.6
Canberra and Queanbeyan about equally	9.4	4.7	10.8	13.5	11.5	9.9	7.9	9.1	9.5
Queanbeyan only or mainly	44.8	22.4	51.8	64.5	54.8	47.2	37.6	43.6	45.6
Total Canberra and/or Queanbeyan	69.4	34.7	80.2	100.0	84.9	73.2	58.3	67.6	70.7
Goulburn + nearby towns	3.6	10.7	1.1	0.0	1.5	2.3	5.7	2.5	4.4
Batemans Bay + nearby towns	2.2	2.7	2.2	0.0	0.0	2.3	3.3	5.0	0.0
Total beyond Palerang	75.2	48.1	83.5	100.0	86.4	77.8	67.3	75.1	75.1
Braidwood [town]	18.4	49.3	7.7	0.0	9.1	17.1	24.4	17.6	19.0
Bungendore [town]	4.6	1.3	6.5	0.0	1.5	3.7	6.9	4.6	4.6
Captains Flat [town]	0.0	0.0	0.0	0.0	0.0	0.0	0.0	0.0	0.0
Not applicable/don't do that	1.8	1.3	2.2	0.0	3.0	1.4	1.4	2.5	1.3

Table 15b:

<i>Caution: Small base sizes.</i>	Total %	Town of Braidwood %	Town of Bungendore %	Town of Captains Flat %	Villages %	Rural Resid'l %	Farms %
Canberra only or mainly	15.2	6.8	19.1	22.0	5.9	20.3	20.5
Canberra and Queanbeyan about equally	9.4	4.3	12.1	14.0	3.7	13.0	13.1
Queanbeyan only or mainly	44.8	19.7	55.4	64.0	17.1	59.3	59.7
Total Canberra and/or Queanbeyan	69.4	30.8	86.6	100.0	26.7	92.6	93.3
Goulburn + nearby towns	3.6	12.3	1.0	0.0	0.0	3.3	0.0
Batemans Bay + nearby towns	2.2	0.0	0.0	0.0	20.0	0.0	0.0
Total beyond Palerang	75.2	43.1	87.6	100.0	46.7	95.9	93.3
Braidwood [town]	18.4	53.8	0.0	0.0	53.3	0.0	0.0
Bungendore [town]	4.6	1.5	9.2	0.0	0.0	1.7	6.7
Captains Flat [town]	0.0	0.0	0.0	0.0	0.0	0.0	0.0
Not applicable/don't do that	1.8	1.5	3.2	0.0	0.0	2.5	0.0
Mean	3.8	5.8	3.3	2.0	5.0	2.6	2.5

Table 16a:**Q.6 Where do you shop for major household items such as whitegoods and furniture?**

	Total %	Town of and Area around: %			Age %			Gender %	
		Braidwood	Bungendore	Captains Flat	18-39 years	40-54 years	55+ years	Men	Women
Canberra only or mainly	48.3	27.3	55.1	63.9	57.6	52.3	40.3	49.1	47.5
Canberra and Queanbeyan about equally	12.1	6.8	13.8	16.0	14.4	13.1	10.1	12.3	11.9
Queanbeyan only or mainly	15.1	8.6	17.3	20.1	18.2	16.4	12.6	15.5	15.0
Total Canberra and/or Queanbeyan	75.5	42.7	86.2	100.0	90.2	81.8	63.0	76.9	74.4
Goulburn + nearby towns	2.5	9.3	0.0	0.0	0.0	1.1	4.9	0.8	3.8
Batemans Bay + nearby towns	0.7	0.0	1.1	0.0	0.0	2.3	0.0	1.7	0.0
Total beyond Palerang	78.7	52.0	87.3	100.0	90.2	85.2	67.9	79.4	78.2
Braidwood [town]	13.7	42.7	3.3	0.0	4.5	8.0	22.8	14.3	13.3
Bungendore [town]	0.4	0.0	0.6	0.0	0.0	1.1	0.0	0.8	0.0
Captains Flat [town]	0.0	0.0	0.0	0.0	0.0	0.0	0.0	0.0	0.0
Unsure/it varies/don't know	1.6	0.0	2.5	0.0	0.0	3.4	1.2	0.4	2.5
Not applicable/don't do that	5.6	5.3	6.4	0.0	5.3	2.3	8.1	5.0	6.0

Table 16b:

<i>Caution: Small base sizes.</i>	Total %	Town of Braidwood %	Town of Bungendore %	Town of Captains Flat %	Villages %	Rural Resid'l %	Farms %
Canberra only or mainly	48.3	27.6	58.0	64.0	25.6	60.8	59.7
Canberra and Queanbeyan about equally	12.1	6.9	14.5	16.0	6.4	15.2	14.9
Queanbeyan only or mainly	15.5	8.6	18.1	20.0	8.0	19.0	18.7
Total Canberra and/or Queanbeyan	75.5	43.1	90.6	100.0	40.0	95.0	93.3
Goulburn + nearby towns	2.5	10.8	0.0	0.0	0.0	0.0	0.0
Batemans Bay + nearby towns	0.7	0.0	0.0	0.0	6.7	0.0	0.0
Total beyond Palerang	78.7	53.9	90.6	100.0	46.7	95.0	93.3
Braidwood [town]	13.7	40.0	0.0	0.0	33.3	0.0	6.7
Bungendore [town]	0.4	0.0	0.0	0.0	0.0	3.3	0.0
Captains Flat [town]	0.0	0.0	0.0	0.0	0.0	0.0	0.0
Unsure/ it varies/ don't know	1.6	0.0	2.0	0.0	6.7	1.7	0.0
Not applicable/ don't do that	5.6	6.2	7.4	0.0	13.3	0.0	0.0
Mean	4.3	5.7	3.9	2.0	7.9	2.5	2.4

Table 17a:**Q.7 Where do you mostly visit for minor top-up food and grocery shopping?**

	Total %	Town of and Area around: %			Age %			Gender %	
		Braidwood	Bungendore	Captains Flat	18-39 years	40-54 years	55+ years	Men	Women
Canberra only or mainly	8.0	5.4	7.1	35.4	14.2	6.3	5.8	10.3	6.2
Canberra and Queanbeyan about equally	0.0	0.0	0.0	0.0	0.0	0.0	0.0	0.0	0.0
Queanbeyan only or mainly	12.9	1.3	11.7	55.1	23.2	10.2	9.4	16.8	10.1
Total Canberra and/or Queanbeyan	20.9	6.7	18.8	90.5	37.4	16.5	15.2	27.1	16.3
Goulburn + nearby towns	0.4	1.3	0.0	0.0	0.0	0.0	0.8	0.8	0.0
Total beyond Palerang	21.3	8.0	18.8	90.5	37.4	16.5	16.0	27.9	16.3
Braidwood [town]	31.8	86.7	12.2	4.8	18.1	34.2	37.4	30.3	32.9
Bungendore [town]	45.1	2.7	68.0	0.0	44.5	49.3	42.5	37.6	50.8
Captains Flat [town]	0.0	0.0	0.0	0.0	0.0	0.0	0.0	0.0	0.0
Not applicable/ don't do that	1.8	2.7	1.1	4.8	0.0	0.0	4.1	4.2	0.0

Table 17b:

<i>Caution: Small base sizes.</i>	Total %	Town of Braidwood %	Town of Bungendore %	Town of Captains Flat %	Villages %	Rural Resid'l %	Farms %
Canberra only or mainly	8.0	1.8	5.5	34.4	2.5	14.1	10.1
Canberra and Queanbeyan about equally	0.0	0.0	0.0	0.0	0.0	0.0	0.0
Queanbeyan only or mainly	12.9	2.8	9.1	56.1	4.2	23.1	16.6
Total Canberra and/or Queanbeyan	20.9	4.6	14.6	90.5	6.7	37.2	26.7
Goulburn + nearby towns	0.4	1.5	0.0	0.0	0.0	0.0	0.0
Total beyond Palerang	21.3	6.1	14.6	90.5	6.7	37.2	26.7
Braidwood [town]	31.8	90.8	0.0	4.8	86.7	0.0	6.7
Bungendore [town]	45.1	3.1	85.4	0.0	0.0	56.2	66.7
Captains Flat [town]	0.0	0.0	0.0	0.0	0.0	0.0	0.0
Not applicable/ don't do that	1.8	0.0	0.0	4.8	6.7	6.6	0.0
Mean	7.4	7.7	8.0	3.2	8.5	7.3	7.1

Table 18a:**Q.8 In which city or town are your main healthcare providers located, such as your doctor, dentist and the like?**

	Total %	Town of and Area around: %			Age %			Gender %	
		Braidwood	Bungendore	Captains Flat	18-39 years	40-54 years	55+ years	Men	Women
Canberra only or mainly	38.9	11.5	45.9	78.0	46.1	37.8	36.0	37.1	40.5
Canberra and Queanbeyan about equally	2.1	0.6	2.4	4.0	2.4	1.9	1.8	1.9	2.1
Queanbeyan only or mainly	9.0	2.6	10.5	18.0	10.7	8.7	8.3	8.5	9.3
Total Canberra and/or Queanbeyan	50.0	14.7	58.8	100.0	59.2	48.4	46.1	47.5	51.9
Goulburn + nearby towns	1.8	4.0	1.1	0.0	0.0	3.4	1.6	1.7	1.9
Batemans Bay + nearby towns	0.7	0.0	1.1	0.0	0.0	0.0	1.6	0.0	1.3
Further (eg, Sydney, Melbourne, etc)	1.7	1.3	2.1	0.0	0.0	2.3	2.2	1.5	1.9
Total beyond Palerang	54.2	20.0	63.1	100.0	59.2	54.1	51.5	50.7	57.0
Braidwood [town]	27.1	80.0	8.3	0.0	19.6	26.2	31.7	31.1	24.1
Bungendore [town]	18.0	0.0	27.5	0.0	21.1	17.4	16.7	17.4	18.4
Burra [area]	0.4	0.0	0.6	0.0	0.0	1.1	0.0	0.0	0.6
Captains Flat [town]	0.0	0.0	0.0	0.0	0.0	0.0	0.0	0.0	0.0
Not applicable/ don't do that	0.4	0.0	0.6	0.0	0.0	1.1	0.0	0.8	0.0

Table 18b:

<i>Caution: Small base sizes.</i>	Total %	Town of Braidwood %	Town of Bungendore %	Town of Captains Flat %	Villages %	Rural Resid'l %	Farms %
Canberra only or mainly	38.9	10.8	5.5	78.0	10.4	60.0	41.6
Canberra and Queanbeyan about equally	2.1	0.6	2.6	4.0	0.5	3.1	2.1
Queanbeyan only or mainly	9.0	2.4	11.7	18.0	2.4	13.8	9.6
Total Canberra and/ or Queanbeyan	50.0	13.8	64.8	100.0	13.3	76.9	53.3
Goulburn + nearby towns	1.8	4.6	0.0	0.0	6.7	0.0	0.0
Batemans Bay + nearby towns	0.7	0.0	0.0	0.0	6.7	0.0	0.0
Further (eg, Sydney, Melbourne, etc)	1.7	1.5	1.7	0.0	6.7	0.0	0.0
Total beyond Palerang	54.2	19.9	66.5	100.0	33.4	76.9	53.3
Braidwood [town]	27.1	80.0	1.0	0.0	66.7	0.0	6.7
Bungendore [town]	18.0	0.0	30.5	0.0	0.0	23.1	40.0
Burra [area]	0.4	0.0	1.0	0.0	0.0	0.0	0.0
Captains Flat [town]	0.0	0.0	0.0	0.0	0.0	0.0	0.0
Not applicable/ don't do that	0.4	0.0	1.0	0.0	0.0	0.0	0.0
Mean	5.1	6.9	4.5	2.0	6.3	3.6	5.2

Table 19a:**Q.9 Which city or town do you usually visit for entertainment?**

	Total %	Area %			Age %			Gender %	
		Braidwood	Bungendore	Captains Flat	18-39 years	40-54 years	55+ years	Men	Women
Canberra only or mainly	56.3	43.1	60.0	68.9	69.3	60.3	46.0	55.2	56.8
Canberra and Queanbeyan about equally	1.9	1.5	2.1	2.4	2.4	2.1	1.6	1.9	2.0
Queanbeyan only or mainly	7.8	6.1	8.5	9.7	9.8	8.5	6.5	7.8	8.0
Total Canberra and/or Queanbeyan	66.0	50.7	70.6	81.0	81.5	70.9	54.1	64.9	66.8
Further (eg, Sydney, Melbourne, etc)	3.7	5.3	3.5	0.0	0.0	6.0	4.1	4.4	3.2
Goulburn + nearby towns	2.5	6.7	1.1	0.0	0.0	5.7	1.6	4.2	1.3
Batemans Bay + nearby towns	1.9	0.0	2.9	0.0	1.9	4.6	0.0	1.7	2.1
Total beyond Palerang	74.1	62.7	78.1	81.0	83.4	87.2	59.8	75.2	73.4
Braidwood [town]	5.8	18.7	1.1	0.0	1.5	2.3	10.6	3.4	7.6
Bungendore [town]	6.4	0.0	9.8	0.0	6.0	4.3	8.1	6.3	6.5
Captains Flat [town]	0.0	0.0	0.0	0.0	0.0	0.0	0.0	0.0	0.0
Unsure/it varies/don't know	0.9	0.0	0.8	4.8	3.0	0.0	0.4	0.4	1.3
Not applicable/don't do that	12.8	18.7	10.2	14.3	6.0	6.3	21.1	14.7	11.4

Table 19b:

<i>Caution: Small base sizes.</i>	Total %	Town of Braidwood %	Town of Bungendore %	Town of Captains Flat %	Villages %	Rural Resid'l %	Farms %
Canberra only or mainly	56.3	44.4	67.3	68.9	22.7	67.4	56.7
Canberra and Queanbeyan about equally	1.9	1.6	2.4	2.4	0.8	2.4	2.0
Queanbeyan only or mainly	7.8	6.3	9.5	9.7	3.2	9.5	8.0
Total Canberra and/or Queanbeyan	66.0	52.3	79.2	81.0	26.7	79.3	66.7
Goulburn + nearby towns	2.5	7.7	0.0	0.0	6.7	0.0	0.0
Batemans Bay + nearby towns	1.9	0.0	1.2	0.0	13.3	0.0	0.0
Further (eg, Sydney, Melbourne, etc)	3.7	6.2	2.2	0.0	13.3	0.0	0.0
Total beyond Palerang	74.1	66.2	82.6	81.0	60.0	79.3	66.7
Braidwood [town]	5.8	21.5	0.0	0.0	6.7	0.0	0.0
Bungendore [town]	6.4	0.0	8.4	0.0	0.0	4.1	26.7
Captains Flat [town]	0.0	0.0	0.0	0.0	0.0	0.0	0.0
Unsure/ it varies/ don't know	0.9	0.0	1.0	4.8	0.0	1.7	0.0
Not applicable/ don't do that	12.8	12.3	7.9	14.3	33.3	14.9	6.7
Mean	5.7	6.1	4.4	5.8	9.5	5.6	5.2

Table 20a:**Q.10 Which city or town do you mostly associate with the provision of primary, secondary or tertiary education for your family?**

	Total %	Town of and Area around: %			Age %			Gender %	
		Braidwood	Bungendore	Captains Flat	18-39 years	40-54 years	55+ years	Men	Women
Canberra only or mainly	29.9	14.3	35.4	39.0	43.7	31.4	21.5	31.6	29.5
Canberra and Queanbeyan about equally	2.9	1.4	3.4	3.7	4.2	3.0	2.0	2.9	2.8
Queanbeyan only or mainly	14.8	7.0	17.4	19.2	21.5	15.5	10.6	14.0	14.5
Total Canberra and/or Queanbeyan	47.6	22.7	56.2	61.9	69.4	49.9	34.1	48.5	46.8
Goulburn + nearby towns	3.6	13.3	0.0	0.0	3.0	5.7	2.4	4.2	3.2
Further (eg, Sydney, Melbourne, etc)	1.4	2.7	1.1	0.0	0.0	2.3	1.6	1.7	1.3
Batemans Bay + nearby towns	0.4	1.3	0.0	0.0	0.0	0.0	0.8	0.0	0.6
Total beyond Palerang	53.0	40.0	57.3	61.9	72.4	57.9	38.9	54.4	51.9
Braidwood [town]	12.7	32.0	5.7	4.8	9.4	16.0	12.2	14.3	11.6
Bungendore [town]	7.6	1.3	11.0	0.0	12.1	10.3	3.3	5.7	9.0
Captains Flat [town]	0.7	0.0	0.0	9.5	1.5	1.1	0.0	0.0	1.3
Sutton [area]	0.2	0.0	0.3	0.0	0.0	0.0	0.4	0.0	0.3
Not applicable/ don't do that	25.8	26.7	25.7	23.8	4.5	14.8	45.1	25.6	25.9

Table 20b:

<i>Caution: Small base sizes.</i>	Total %	Town of Braidwood %	Town of Bungendore %	Town of Captains Flat %	Villages %	Rural Resid'1 %	Farms %
Canberra only or mainly	29.9	16.5	37.0	39.0	8.4	51.0	29.4
Canberra and Queanbeyan about equally	2.9	1.6	3.5	3.7	0.8	4.9	2.8
Queanbeyan only or mainly	14.8	8.1	18.3	19.2	4.1	25.1	14.5
Total Canberra and/or Queanbeyan	47.6	26.2	58.8	61.9	13.3	81.0	46.7
Goulburn + nearby towns	3.6	15.4	0.0	0.0	0.0	0.0	0.0
Batemans Bay + nearby towns	0.4	1.5	0.0	0.0	0.0	0.0	0.0
Further (eg, Sydney, Melbourne, etc)	1.4	3.1	2.0	0.0	0.0	0.0	0.0
Total beyond Palerang	53.0	46.2	60.8	61.9	13.3	81.0	46.7
Braidwood [town]	12.7	30.8	2.2	4.8	40.0	0.0	0.0
Bungendore [town]	7.6	1.5	13.2	0.0	0.0	9.1	13.3
Captains Flat [town]	0.7	0.0	0.0	9.5	0.0	0.0	0.0
Sutton [area]	0.2	0.0	0.0	0.0	0.0	1.7	0.0
Not applicable/ don't do that	25.8	21.5	23.8	23.8	46.7	8.3	40.0
Mean	8.6	8.5	7.9	8.0	13.7	4.6	10.9

Table 21a:

Q.11a As you may know, the State Government is seeking to amalgamate various councils throughout NSW, and it has been suggested that Palerang Council be merged with Queanbeyan City Council. In your opinion, should Palerang Council:

READ OUT/ ROTATE	Total %	Area %			Age %			Gender %	
		Braidwood	Bungendore	Captains Flat	18-39 years	40-54 years	55+ years	Men	Women
Continue as an independent council in its own right	54.8	62.7	51.2	57.1	60.8	45.9	57.9	56.1	53.8
Amalgamate with Queanbeyan Council	20.5	17.3	20.9	28.6	21.5	22.5	18.5	20.4	20.6
Amalgamate with Goulburn Council	8.6	9.3	9.3	0.0	7.5	8.3	9.3	8.8	8.4
Amalgamate with Yass Valley Council	0.4	0.0	0.6	0.0	1.5	0.0	0.0	0.8	0.0
Amalgamate with some other Council/s	1.4	1.3	1.1	4.8	0.0	2.3	1.6	2.5	0.6
Be split up among adjoining Councils	8.3	5.3	9.4	9.5	6.0	11.7	7.1	9.5	7.4
Unsure	6.0	4.0	7.6	0.0	2.6	9.4	5.5	1.9	9.2

Table 21b:

<i>Caution: Small base sizes.</i>	Total %	Town of Braidwood %	Town of Bungendore %	Town of Captains Flat %	Villages %	Rural Resid'l %	Farms %
Continue as an independent council in its own right	54.8	60.0	52.9	57.1	60.0	44.6	53.3
Amalgamate with Queanbeyan Council	20.5	16.9	21.8	28.6	6.7	38.8	13.3
Amalgamate with Goulburn Council	8.6	10.8	5.2	0.0	26.7	5.0	6.7
Amalgamate with Yass Valley Council	0.4	0.0	1.0	0.0	0.0	0.0	0.0
Amalgamate with some other Council/s	1.4	1.5	0.0	4.8	0.0	0.0	6.7
Be split up among adjoining Councils	8.3	6.2	6.2	9.5	6.7	9.1	20.0
Unsure	6.0	4.6	12.9	0.0	0.0	2.5	0.0
Mean	2.2	2.0	2.4	2.0	1.9	2.1	2.5

Table 22:

Q.11b	Reasons for responses	n
Why continue as an independent council in its own right [54.8% gave this response]		600
	City council wouldn't understand rural needs/chalk and cheese/mismatch	123
	Current council good enough/anything else worse/if it ain't broke, don't try to fix it	99
	We become junior partner/lose priority/lose our identity/fewer services/poor cousin	89
	Bigger is not better/more bureaucratic/more impersonal/less friendly	71
	Less control over who represents us/loss of local representation	57
	Less money/fewer services per household/more wasted on grandiose projects	56
	More expensive/higher rates	27
	We would inherit their debt/be worse off	26
	Already amalgamated five years ago with negative consequences/don't repeat	22
	Major local job losses/current council staff would lose jobs	17
	Other councils poorly managed/not as good/politicised	14
Why amalgamate with Queanbeyan Council [20.5% gave this response]		225
	Closest to us/our area/already our major local centre/we shop there anyway	76
	Queanbeyan more efficient/progressive/modern/better managed/forward thinking	45
	Would do more for us than Palerang/more resources	26
	Would provide more rates per hectare overall so we benefit/more funds available to us	21
	More/better services	15
	Better deal for towns and villages other than Bungendore/put Bungendore in its place	15
	Easier/more efficient land zoning and controls	12
	Reduced rates/prices/fees	8
	More like us than Goulburn/more connections	7
Why amalgamate with Goulburn Council [8.6% gave this response]		95
	Rural oriented like us/better match/more compatible	45
	Goulburn well-managed/efficient	15
	Has similar history/heritage values	15
	Would be more generous than others/more money	11
	Better services	9
Why amalgamate with Yass Valley Council [0.4% gave this response]		4
	Yass is rural like us/We have more in common with them/Less likely to ignore us/stronger voice	4
Why amalgamate with some other Council [1.4% gave this response]		15
	Eurobodalla the main council mentioned, because it is a similar collection of towns	15
Why be split up among adjoining Councils [8.3% gave this response]		91
	Palerang has disparate communities/previous amalgamation didn't work as artificial mix/heterogeneous	41
	Join like with like so that all towns and villages benefit and none get ignored	26
	Shire too big as is/better to add bits to nearby councils rather than add whole shire to one council	24
Why unsure [6.0% gave this response]		66
	Insufficient information/advice to make decision	66

Table 23a:

Q.12 [ASK ALL] Now thinking of the size of the population around here, over the next 20 years or so would you like to see it increase or stay at about the same level as now? [IF INCREASE, PROBE:] How much would you like to see the population increase by ... for example, over the next 20 years or so would you like to see it increase by half, or double, or triple, or would you like to see it grow even further than that over the next 20 years?

	Total %	Town of and Area around:			Age			Sex	
		Braidwood	Bungendore	Captains Flat	18-39 years	40-54 years	55+ years	Men	Women
More than triple in size	3.2	3.4	2.6	6.9	6.3	1.9	3.4	4.9	2.1
Triple in size	1.1	1.4	0.8	1.9	0.0	2.6	0.2	1.4	0.9
Double in size	16.5	15.2	16.8	18.6	7.2	14.6	19.7	23.7	12.0
Increase by half	23.2	23.2	23.1	23.9	29.2	20.6	23.7	27.6	20.4
Stay the same	51.8	50.7	53.3	43.3	57.4	58.7	45.9	38.3	60.1
Decrease in size	2.5	3.9	1.6	4.3	0.0	0.0	4.8	2.3	2.7
Unsure	1.8	2.2	1.7	1.2	0.0	1.6	2.4	1.9	1.8

Table 23b:

<i>Caution: Small base sizes.</i>	Total %	Town of Braidwood %	Town of Bungendore %	Town of Captains Flat %	Villages %	Rural Resid'l %	Farms %
More than triple in size	3.2	3.8	1.0	6.9	1.2	3.7	3.3
Triple in size	1.1	2.2	0.7	1.9	1.2	0.9	1.1
Double in size	16.5	15.1	12.4	18.6	22.0	18.5	15.2
Increase by half	23.2	46.8	25.6	23.9	19.1	22.3	15.6
Stay the same	51.8	31.0	57.9	43.3	53.5	50.8	57.0
Decrease in size	2.5	0.0	1.0	4.3	0.0	2.2	5.2
Unsure	1.8	1.1	1.5	1.2	3.0	1.6	2.5

Table 24a:

Q.13 [ASK ALL] And what about the future character of the area ... would you like to see the character of the area change, or remain about the same? IF CHANGE, PROBE: In what ways would you like the character of the area to change, for example what other kinds of development would you like to see happen?

	Total %	Town of and Area around:			Age			Sex	
		Braidwood	Bungendore	Captains Flat	18-39 years	40-54 years	55+ years	Men	Women
Change	17.8	20.2	17.1	13.5	26.6	18.7	15.4	23.3	14.5
Remain about the same	82.2	79.8	82.9	86.5	73.4	81.3	84.6	76.7	85.5

Table 24b:

<i>Caution: Small base sizes.</i>	Total %	Town of Braidwood %	Town of Bungendore %	Town of Captains Flat %	Villages %	Rural Resid'l %	Farms %
Change	17.8	14.1	18.4	13.5	18.1	16.3	22.1
Remain about the same	82.2	85.9	81.6	86.5	81.9	83.7	77.9

Table 25a:

Q.14 [ASK ALL] Block sizes in newer housing estates are generally a bit smaller than in older estates. Do these smaller block sizes improve or detract from the character of the area, or does the character of the area remain the same? IF IMPROVE/DETRACT, PROBE: In what ways do the smaller block sizes improve/detract from the character of the area?

	Total %	Town of and Area around:			Age			Sex	
		Braidwood	Bungendore	Captains Flat	18-39 years	40-54 years	55+ years	Men	Women
Improve	5.4	6.5	4.9	4.6	2.7	0.9	9.0	6.6	4.6
Detract from	61.5	61.7	61.8	57.2	37.3	81.6	52.4	53.5	66.3
Remain about the same	33.2	31.9	33.2	38.2	60.0	17.5	40.6	39.9	29.1

Table 25b:

<i>Caution: Small base sizes.</i>	Total %	Town of Braidwood %	Town of Bungendore %	Town of Captains Flat %	Villages %	Rural Resid'l %	Farms %
Improve	5.4	16.3	4.8	4.6	3.3	5.2	3.3
Detract from	61.5	56.2	66.2	57.2	65.2	59.0	63.4
Remain about the same	33.2	27.6	28.9	38.2	31.5	35.8	33.3

Table 26a:

Q.15 [ASK ALL] In some towns medium density developments including town houses and duplexes have been taking place. Do these medium density developments improve or detract from the character of the area, or does the character of the area remain the same? IF IMPROVE/DETRACT, PROBE: In what ways do the medium density developments improve/detract from the character of the area?

	Total %	Town of and Area around:			Age			Sex	
		Braidwood	Bungendore	Captains Flat	18-39 years	40-54 years	55+ years	Men	Women
Improve	12.6	10.9	13.7	9.2	8.9	8.7	16.0	16.9	9.9
Detract from	56.8	59.6	56.4	47.6	59.7	58.0	55.3	54.4	58.2
Remain about the same	30.6	29.5	29.8	43.1	31.3	33.3	28.7	28.7	32.0

Table 26b:

<i>Caution: Small base sizes.</i>	Total %	Town of Braidwood %	Town of Bungendore %	Town of Captains Flat %	Villages %	Rural Resid'l %	Farms %
Improve	12.6	10.6	15.8	9.2	15.5	12.4	11.0
Detract from	56.8	53.0	63.1	47.6	50.5	53.7	61.7
Remain about the same	30.6	36.5	21.1	43.1	34.1	34.0	27.3

Table 27a:

Q.16 I'm now going to read out a list of some of the many services provided by Palerang Council. As I read out each one, I'd like you to rate Council's performance on a scale where '10' means excellent, and '1' means terrible? Whether you have personal experience of them or not, I'd like you to rate them, based on your impressions and perceptions.

1. the maintenance of roads in towns and villages

	Total %	Town of and Area around:			Age			Gender	
		Braidwood	Bungendore	Captains Flat	18-39 years	40-59 years	55+ years	Men	Women
1	8.2	6.6	8.7	11.1	6.3	14.5	4.2	9.7	7.2
2	5.3	2.7	6.6	6.2	0.0	5.6	6.3	4.9	5.6
3	8.3	8.8	8.3	6.6	5.3	8.1	9.1	11.0	6.7
4	11.0	10.9	10.2	18.7	5.1	12.2	11.4	8.9	12.4
5	23.2	28.3	21.2	19.3	21.2	27.7	20.5	16.4	27.4
6	14.7	13.8	15.0	15.6	3.0	11.6	19.2	16.3	13.6
7	15.1	16.1	14.6	15.8	21.2	13.6	15.0	14.4	15.6
8	10.8	10.5	11.5	5.8	37.9	6.2	8.4	12.6	9.6
9	2.8	2.0	3.5	0.9	0.0	0.5	5.0	5.2	1.4
10	0.5	0.4	0.6	0.0	0.0	0.0	1.0	0.5	0.5
Mean	5.1	5.2	5.1	4.7	6.2	4.6	5.3	5.2	5.1

Table 27b:

<i>Caution: Small base sizes.</i>	Total %	Town of Braidwood %	Town of Bungendore %	Town of Captains Flat %	Villages %	Rural Resid'l %	Farms %
1	8.2	1.3	1.6	11.1	15.3	11.5	8.3
2	5.3	4.3	3.4	6.2	9.7	7.8	2.2
3	8.3	5.1	6.4	6.6	10.1	9.0	9.9
4	11.0	11.7	9.4	18.7	10.4	10.7	10.6
5	23.2	30.5	19.8	19.3	24.4	21.4	27.6
6	14.7	19.0	19.5	15.6	12.5	12.8	12.2
7	15.1	17.7	16.6	15.8	5.0	15.0	15.5
8	10.8	5.8	17.7	5.8	7.3	8.7	12.0
9	2.8	2.9	3.6	0.9	5.3	3.1	1.7
10	0.5	1.7	1.9	0.0	0.0	0.0	0.0
Mean	5.1	5.5	5.9	4.7	4.4	4.8	5.2

Table 28a:

Q.16 I'm now going to read out a list of some of the many services provided by Palerang Council. As I read out each one, I'd like you to rate Council's performance on a scale where '10' means excellent, and '1' means terrible? Whether you have personal experience of them or not, I'd like you to rate them, based on your impressions and perceptions.

2. the maintenance of connecting roads in their care

	Total %	Town of and Area around:			Age			Gender	
		Braidwood	Bungendore	Captains Flat	18-39 years	40-59 years	55+ years	Men	Women
1	7.0	1.2	9.1	13.2	5.3	9.9	5.3	8.5	6.1
2	6.2	5.9	5.9	10.1	10.4	6.3	5.3	4.3	7.4
3	5.4	5.0	5.7	4.4	0.0	9.1	3.8	4.2	6.0
4	13.7	14.8	12.9	16.9	19.4	17.5	10.0	14.2	13.4
5	28.1	31.9	27.0	22.2	26.3	26.5	29.7	24.1	30.6
6	15.8	16.5	14.9	20.2	11.9	13.9	17.9	17.3	14.9
7	11.7	12.5	11.7	9.1	5.5	9.1	14.9	11.8	11.7
8	6.9	5.2	8.1	3.9	20.0	4.4	6.0	6.1	7.5
9	3.2	3.4	3.4	0.0	1.2	3.3	3.5	5.4	1.8
10	1.9	3.7	1.3	0.0	0.0	0.0	3.7	4.2	0.5
Mean	5.1	5.4	5.0	4.4	5.2	4.6	5.4	5.3	5.0

Table 28b:

<i>Caution: Small base sizes.</i>	Total %	Town of Braidwood %	Town of Bungendore %	Town of Captains Flat %	Villages %	Rural Resid'l %	Farms %
1	7.0	1.3	6.3	13.2	13.0	10.1	1.1
2	6.2	1.8	2.9	10.1	6.5	7.5	7.2
3	5.4	2.2	2.8	4.4	9.4	6.7	5.8
4	13.7	8.7	17.2	16.9	5.3	11.7	16.7
5	28.1	30.1	21.9	22.2	39.8	27.8	32.5
6	15.8	22.5	16.7	20.2	10.1	14.7	14.7
7	11.7	17.9	14.1	9.1	6.6	11.1	10.8
8	6.9	8.5	14.7	3.9	0.0	5.8	4.2
9	3.2	0.0	2.4	0.0	6.5	3.5	4.4
10	1.9	7.1	1.0	0.0	2.8	1.2	2.6
Mean	5.1	6.0	5.5	4.4	4.7	4.9	5.3

Table 29a:

Q.16 I'm now going to read out a list of some of the many services provided by Palerang Council. As I read out each one, I'd like you to rate Council's performance on a scale where '10' means excellent, and '1' means terrible? Whether you have personal experience of them or not, I'd like you to rate them, based on your impressions and perceptions.

3. the management of residential development within the area in recent years

	Total %	Town of and Area around:			Age			Gender	
		Braidwood	Bungendore	Captains Flat	18-39 years	40-59 years	55+ years	Men	Women
1	11.2	7.3	12.8	13.6	0.0	13.0	12.3	14.2	9.2
2	8.4	6.0	9.2	11.4	3.0	12.7	6.5	4.3	10.9
3	9.7	10.7	9.3	8.9	1.2	10.2	11.1	11.3	8.7
4	13.5	14.7	13.3	10.5	8.3	11.9	15.8	12.7	14.1
5	23.6	23.6	23.2	27.7	23.3	20.1	26.1	21.1	25.2
6	10.0	12.7	9.2	5.5	17.1	9.8	8.7	7.6	11.6
7	10.3	13.2	8.8	10.4	6.8	14.8	7.9	12.8	8.7
8	9.1	6.4	10.3	9.8	31.3	5.0	7.2	11.7	7.3
9	2.5	3.4	2.4	0.0	8.9	1.3	2.1	1.0	3.5
10	1.7	2.0	1.5	2.2	0.0	1.3	2.4	3.2	0.8
Mean	4.7	5.0	4.6	4.5	6.4	4.4	4.6	4.8	4.7

Table 29b:

<i>Caution: Small base sizes.</i>	Total %	Town of Braidwood %	Town of Bungendore %	Town of Captains Flat %	Villages %	Rural Resid'l %	Farms %
1	11.2	5.6	9.0	13.6	19.9	13.8	7.9
2	8.4	8.6	9.0	11.4	9.5	9.3	5.1
3	9.7	6.5	10.4	8.9	7.7	8.9	12.1
4	13.5	10.5	16.2	10.5	11.1	12.1	16.1
5	23.6	33.1	22.9	27.7	22.9	23.3	20.5
6	10.0	16.4	10.4	5.5	5.6	9.0	11.5
7	10.3	9.1	5.3	10.4	10.3	10.5	14.5
8	9.1	10.2	12.7	9.8	8.4	9.4	5.1
9	2.5	0.0	4.1	0.0	1.8	1.6	4.5
10	1.7	0.0	0.0	2.2	2.9	2.1	2.7
Mean	4.7	4.9	4.8	4.5	4.4	4.6	5.0

Table 30a:

Q.16 I'm now going to read out a list of some of the many services provided by Palerang Council. As I read out each one, I'd like you to rate Council's performance on a scale where '10' means excellent, and '1' means terrible? Whether you have personal experience of them or not, I'd like you to rate them, based on your impressions and perceptions.

4. the household garbage collection in some areas

	Total %	Town of and Area around:			Age			Gender	
		Braidwood	Bungendore	Captains Flat	18-39 years	40-59 years	55+ years	Men	Women
1	15.2	17.3	14.7	11.7	6.5	13.5	18.4	12.3	17.2
2	2.5	2.8	2.6	1.0	0.0	6.7	0.3	1.2	3.4
3	3.4	2.0	3.7	5.8	0.0	6.1	2.4	4.2	2.9
4	4.5	4.6	4.4	4.7	1.6	4.4	5.2	7.4	2.5
5	17.8	18.7	16.7	23.6	33.7	15.2	16.0	14.7	19.9
6	7.9	10.6	6.8	7.2	13.2	9.4	5.7	10.1	6.4
7	10.3	8.3	10.8	13.5	7.3	10.7	10.8	13.2	8.4
8	20.2	21.5	20.0	17.8	23.9	18.5	20.6	15.6	23.4
9	5.1	1.9	6.6	4.1	3.7	5.2	5.3	6.0	4.5
10	13.0	12.3	13.6	10.6	10.1	10.4	15.4	15.5	11.3
Mean	5.9	5.7	6.0	5.9	6.4	5.7	6.0	6.2	5.8

Table 30b:

<i>Caution: Small base sizes.</i>	Total %	Town of Braidwood %	Town of Bungendore %	Town of Captains Flat %	Villages %	Rural Resid'l %	Farms %
1	15.2	1.8	0.0	11.7	36.2	20.4	23.4
2	2.5	1.8	0.0	1.0	5.7	3.7	3.2
3	3.4	0.0	3.6	5.8	2.7	4.0	2.8
4	4.5	5.5	1.0	4.7	6.4	6.2	4.2
5	17.8	3.8	4.0	23.6	24.7	23.3	24.6
6	7.9	3.2	6.5	7.2	4.1	7.4	13.5
7	10.3	16.6	12.4	13.5	6.9	10.5	5.0
8	20.2	33.8	36.3	17.8	4.8	12.3	16.7
9	5.1	6.8	12.0	4.1	4.1	3.7	0.0
10	13.0	26.6	24.2	10.6	4.6	8.5	6.6
Mean	5.9	7.8	8.0	5.9	4.0	5.2	4.9

Table 31a:

Q.16 I'm now going to read out a list of some of the many services provided by Palerang Council. As I read out each one, I'd like you to rate Council's performance on a scale where '10' means excellent, and '1' means terrible? Whether you have personal experience of them or not, I'd like you to rate them, based on your impressions and perceptions.

5. the knowledge and accuracy of council staff

	Total %	Town of and Area around:			Age			Gender	
		Braidwood	Bungendore	Captains Flat	18-39 years	40-59 years	55+ years	Men	Women
1	2.9	0.0	4.6	0.0	0.0	3.3	3.3	3.6	2.5
2	2.5	2.3	2.6	1.9	9.7	0.6	2.2	1.5	3.0
3	7.0	10.0	5.6	7.1	1.9	11.0	5.4	3.8	9.0
4	8.9	6.2	9.3	16.6	5.6	7.4	10.6	8.6	9.1
5	27.8	25.6	28.3	31.8	10.6	33.5	27.4	27.0	28.2
6	10.4	10.1	10.4	10.9	12.8	11.8	8.9	12.7	9.0
7	11.7	14.1	10.5	12.6	28.0	9.1	10.1	12.8	11.1
8	17.8	21.7	16.5	12.4	14.4	16.6	19.2	16.4	18.6
9	4.9	4.3	5.6	1.4	9.4	4.8	4.0	5.6	4.5
10	6.2	5.5	6.6	5.3	7.5	1.9	8.8	8.2	4.9
Mean	6.0	6.2	5.9	5.7	6.5	5.6	6.1	6.2	5.8

Table 31b:

<i>Caution: Small base sizes.</i>	Total %	Town of Braidwood %	Town of Bungendore %	Town of Captains Flat %	Villages %	Rural Resid'l %	Farms %
1	2.9	0.0	6.1	0.0	10.0	3.1	0.0
2	2.5	0.0	1.7	1.9	6.5	2.5	3.1
3	7.0	1.4	5.8	7.1	5.2	5.6	12.9
4	8.9	11.9	9.2	16.6	8.7	9.5	4.3
5	27.8	30.7	21.1	31.8	22.7	33.1	23.9
6	10.4	12.4	9.0	10.9	13.4	10.8	9.4
7	11.7	17.4	12.0	12.6	2.6	10.8	13.0
8	17.8	19.8	17.4	12.4	18.3	15.7	22.4
9	4.9	2.4	11.1	1.4	4.6	2.7	4.9
10	6.2	4.0	6.8	5.3	8.0	6.3	6.0
Mean	6.0	6.2	6.1	5.7	5.5	5.8	6.1

Table 32a:

Q.16 I'm now going to read out a list of some of the many services provided by Palerang Council. As I read out each one, I'd like you to rate Council's performance on a scale where '10' means excellent, and '1' means terrible? Whether you have personal experience of them or not, I'd like you to rate them, based on your impressions and perceptions.

6. the courtesy and helpfulness of council staff

	Total %	Town of and Area around:			Age			Gender	
		Braidwood	Bungendore	Captains Flat	18-39 years	40-59 years	55+ years	Men	Women
1	2.0	0.0	3.2	0.0	1.8	1.8	2.1	1.8	2.1
2	1.3	1.7	1.2	0.0	0.0	3.1	0.3	0.5	1.7
3	2.9	3.1	3.2	0.0	6.3	1.3	3.4	1.8	3.6
4	3.8	0.7	4.7	9.1	1.2	5.4	3.1	5.1	3.0
5	19.2	18.1	18.8	27.3	11.3	22.4	18.6	18.5	19.6
6	9.7	9.3	10.4	5.5	7.5	12.7	8.1	7.3	11.1
7	17.4	16.4	17.1	24.0	29.9	16.5	15.3	24.6	13.0
8	23.8	32.1	20.2	19.2	21.8	22.4	25.2	20.0	26.1
9	9.3	9.3	9.8	4.6	10.8	10.1	8.4	8.5	9.8
10	10.7	9.4	11.4	10.4	9.6	4.3	15.5	11.9	10.0
Mean	6.9	7.1	6.7	6.7	7.0	6.5	7.1	6.9	6.8

Table 32b:

<i>Caution: Small base sizes.</i>	Total %	Town of Braidwood %	Town of Bungendore %	Town of Captains Flat %	Villages %	Rural Resid'l %	Farms %
1	2.0	0.0	3.1	0.0	8.9	2.5	0.0
2	1.3	0.0	1.7	0.0	2.6	0.7	2.3
3	2.9	0.0	4.6	0.0	3.9	2.3	4.1
4	3.8	2.6	1.3	9.1	7.2	6.2	0.0
5	19.2	6.4	12.5	27.3	20.0	22.1	22.1
6	9.7	6.4	14.6	5.5	5.6	8.8	10.3
7	17.4	10.0	14.3	24.0	13.8	19.1	18.6
8	23.8	43.9	22.1	19.2	13.6	20.1	28.0
9	9.3	10.4	13.5	4.6	10.3	7.7	8.9
10	10.7	20.3	12.2	10.4	14.1	10.6	5.7
Mean	6.9	8.0	7.0	6.7	6.3	6.7	6.8

Table 33a:

Q.17 [ASK ALL] Thinking of Palerang Council as a whole, that is, taking into account all the services they provide and facilities they run, not just the few I've mentioned, how would you rate the Council's performance overall Again, a score of 10 would be excellent performance and 1 would be terrible how would you rate the overall performance of Palerang Council as a whole?

	Total %	Town of and Area around:			Age			Gender	
		Braidwood	Bungendore	Captains Flat	18-39 years	40-54 years	55+ years	Men	Women
1 Terrible	3.2	1.3	3.9	4.8	0.0	4.6	4.1	5.7	1.4
2	9.6	6.7	11.6	4.8	1.9	14.5	10.6	14.3	6.3
3	9.0	10.7	8.4	9.5	7.5	7.7	11.0	10.5	8.1
4	9.9	18.7	5.8	14.3	6.0	12.0	10.6	10.5	9.5
5	18.1	13.3	19.3	23.8	19.2	17.9	17.5	11.1	23.3
6	12.5	12.0	13.1	9.5	16.6	13.4	9.8	14.5	11.1
7	18.8	20.0	19.3	9.5	25.3	18.2	15.7	14.7	21.8
8	13.1	12.0	12.7	19.0	18.5	8.3	13.4	12.8	13.1
9	2.8	4.0	1.9	4.8	4.9	1.1	2.6	0.8	4.1
10 Excellent	2.9	1.3	3.9	0.0	0.0	2.3	4.9	5.0	1.3
Mean	5.4	5.5	5.4	5.4	6.2	5.0	5.4	5.1	5.7
Total 6-10	50.1	49.3	50.9	42.8	65.3	43.3	46.4	47.8	51.4

Table 33b:

<i>Caution: Small base sizes.</i>	Total %	Town of Braidwood %	Town of Bungendore %	Town of Captains Flat %	Villages %	Rural Resid'l %	Farms %
1	3.2	5.8	2.2	3.1	8.0	4.7	0.0
2	9.6	0.0	8.3	11.9	19.1	12.3	7.1
3	9.0	8.5	2.6	12.8	7.1	9.7	13.2
4	9.9	10.2	11.5	13.7	8.8	9.6	8.2
5	18.1	12.1	20.9	23.2	10.8	18.8	16.8
6	12.5	23.1	12.9	9.1	13.0	11.1	12.1
7	18.8	28.5	19.8	16.4	18.1	17.1	18.4
8	13.1	7.7	12.6	5.5	8.9	11.0	21.6
9	2.8	0.0	7.8	0.0	3.6	2.6	0.0
10	2.9	4.0	1.5	4.3	2.8	3.3	2.6
Mean	5.4	5.7	5.8	4.9	4.9	5.2	5.7

Table 34a:

Q.18 [ASK ALL] How well informed do you feel about the overall activities and initiatives of the Council? On a scale of 1 to 10 where a score of 10 would be totally well informed and 1 would be not informed at all?

	Total %	Town of and Area around:			Age			Gender	
		Braidwood	Bungendore	Captains Flat	18-39 years	40-59 years	55+ years	Men	Women
1	3.9	3.7	4.0	3.2	0.0	2.3	5.8	5.8	2.7
2	5.6	3.9	6.6	4.8	1.8	8.1	4.7	3.3	7.0
3	7.9	9.8	7.0	8.0	5.4	10.2	6.8	6.5	8.8
4	9.0	4.9	10.9	9.9	7.1	5.7	11.7	11.0	7.7
5	28.7	27.2	27.9	42.0	10.4	40.0	24.5	25.8	30.5
6	10.9	12.4	10.8	5.8	25.5	5.8	11.6	11.2	10.8
7	15.2	15.8	15.3	12.0	12.5	16.2	15.1	15.7	14.9
8	12.1	14.3	11.1	10.9	21.2	9.5	12.0	9.9	13.4
9	4.1	5.0	4.0	1.4	12.5	2.2	3.8	5.0	3.6
10	2.5	3.0	2.3	2.2	3.6	0.0	4.1	5.8	0.5
Mean	5.5	5.7	5.4	5.3	6.6	5.2	5.5	5.6	5.4

Table 34b:

<i>Caution: Small base sizes.</i>	Total %	Town of Braidwood %	Town of Bungendore %	Town of Captains Flat %	Villages %	Rural Resid'l %	Farms %
1	3.9	6.5	3.6	3.2	9.2	3.6	2.8
2	5.6	2.1	5.6	4.8	10.0	6.6	4.4
3	7.9	7.7	6.9	8.0	6.0	7.1	10.5
4	9.0	12.5	14.0	9.9	10.1	9.4	2.5
5	28.7	19.4	15.4	42.0	38.8	33.1	29.7
6	10.9	13.7	11.9	5.8	8.9	10.5	11.9
7	15.2	17.4	22.1	12.0	11.3	12.3	15.3
8	12.1	11.1	13.7	10.9	3.0	11.0	15.3
9	4.1	5.2	4.9	1.4	0.0	4.0	5.0
10	2.5	4.3	1.9	2.2	2.8	2.5	2.6
Mean	5.5	5.6	5.7	5.3	4.7	5.4	5.7

Table 35a:

Q.19 [ASK ALL] How well does the Council consult and engage with the community? On a scale of 1 to 10 where a score of 10 would be consulting and engaging extremely well and 1 would be consulting and engaging extremely poorly?

	Total %	Town of and Area around:			Age			Gender	
		Braidwood	Bungendore	Captains Flat	18-39 years	40-59 years	55+ years	Men	Women
1	7.2	4.0	8.7	8.6	0.0	7.2	8.7	8.7	6.4
2	6.2	3.1	7.6	6.3	0.0	6.9	6.9	4.6	7.1
3	11.9	13.4	10.2	21.5	8.2	13.5	11.6	10.2	13.0
4	9.1	7.4	9.6	11.8	5.4	8.8	10.1	8.5	9.5
5	20.6	19.4	21.5	17.3	15.1	18.1	23.4	17.4	22.5
6	14.1	17.7	12.4	13.8	18.7	20.4	8.8	17.9	11.8
7	13.4	16.6	12.5	8.0	9.9	13.9	13.8	14.2	12.9
8	10.8	10.1	11.4	8.2	26.4	8.6	9.3	7.5	12.8
9	3.3	5.7	2.5	0.0	12.4	0.5	3.5	3.8	3.0
10	3.3	2.5	3.6	4.4	3.8	2.1	4.1	7.3	1.0
Mean	5.2	5.6	5.1	4.7	6.6	5.0	5.1	5.4	5.1

Table 35b:

<i>Caution: Small base sizes.</i>	Total %	Town of Braidwood %	Town of Bungendore %	Town of Captains Flat %	Villages %	Rural Resid'l %	Farms %
1	7.2	7.5	6.5	8.6	13.1	9.2	2.8
2	6.2	5.8	4.1	6.3	15.2	8.4	2.3
3	11.9	6.7	8.3	21.5	1.8	12.4	15.6
4	9.1	13.0	12.2	11.8	5.4	8.9	5.7
5	20.6	30.0	20.3	17.3	26.2	21.5	16.1
6	14.1	12.2	16.0	13.8	7.8	11.1	19.4
7	13.4	13.1	10.7	8.0	17.2	12.7	17.8
8	10.8	2.3	15.6	8.2	8.7	9.6	12.6
9	3.3	7.7	1.8	0.0	1.8	2.9	5.1
10	3.3	1.8	4.5	4.4	2.8	3.3	2.7
Mean	5.2	5.1	5.5	4.7	4.8	5.0	5.7

Table 36a:

**Q.20 [ASK ALL] In which of the following ways do you obtain information from Palerang Council at the moment?
[READ OUT PRECODES]**

	Total %	Town of and Area around:			Age			Sex	
		Braidwood	Bungendore	Captains Flat	18-39 years	40-54 years	55+ years	Men	Women
Newsletters (web/emailed)	61.7	66.3	60.0	56.9	61.3	56.5	65.4	65.3	59.5
The Council website (www.Palerang.nsw.gov.au)	32.1	29.2	34.4	23.3	19.4	36.0	31.9	35.8	29.7
Articles, notices or ads in your local newspaper	88.9	89.1	88.6	89.9	89.0	90.9	87.4	85.8	90.7
Articles, notices or ads in the Canberra Times	9.4	6.6	11.1	7.3	3.6	12.0	8.8	11.7	8.0
Announcements on local radio stations	15.5	16.7	15.4	11.3	24.1	11.1	16.8	17.2	14.5
Social media, such as Twitter, Facebook, YouTube, etcetera	1.0	0.2	1.4	0.0	5.4	0.5	0.4	1.0	0.9
Television	13.2	14.5	13.1	8.2	15.8	10.3	14.6	18.2	10.1
[DO NOT READ] None of these	0.2	0.0	0.4	0.0	0.0	0.0	0.5	0.0	0.4

Table 36b:

<i>Caution: Small base sizes.</i>	Total %	Town of Braidwood %	Town of Bungendore %	Town of Captains Flat %	Villages %	Rural Resid'l %	Farms %
Newsletters (web/email)	61.7	60.8	55.6	56.9	57.4	62.8	68.1
The Council website (www.Palerang.nsw.gov.au)	32.1	35.5	45.9	23.3	25.6	29.5	27.2
Articles, notices or ads in your local newspaper	88.9	90.0	94.7	89.9	81.8	86.4	88.8
Articles, notices or ads in the Canberra Times	9.4	14.0	14.3	7.3	8.9	9.6	4.2
Announcements on local radio stations	15.5	26.5	19.3	11.3	12.5	13.7	13.6
Social media, such as Twitter, Facebook, YouTube, etcetera	1.0	0.9	3.6	0.0	0.0	0.5	0.0
Television	13.2	24.5	21.0	8.2	8.9	9.4	11.3
[DO NOT READ] None of these	0.2	0.0	0.0	0.0	1.5	0.4	0.0

Table 37a:

Q.21 [ASK ALL] Including those you have mentioned, in which ways would you prefer to obtain information from Palerang Council in future? [READ OUT PRECODES]

	Total %	Town of and Area around:			Age			Sex	
		Braidwood	Bungendore	Captains Flat	18-39 years	40-54 years	55+ years	Men	Women
Newsletter (web/emailed)	80.2	76.5	82.2	78.4	74.4	80.3	81.3	74.8	83.5
The Council website (www.Palerang.nsw.gov.au)	40.5	33.5	44.5	35.3	39.6	50.5	33.7	38.0	42.0
Articles, notices or ads in your local newspaper	79.6	73.5	82.8	77.3	72.8	83.7	78.1	73.5	83.2
Articles, notices or ads in the Canberra Times	11.4	8.0	12.9	12.9	7.4	11.2	12.3	14.4	9.5
Announcements on local radio stations	26.5	22.4	28.1	30.7	32.5	26.9	25.0	20.0	30.5
Social media, such as Twitter, Facebook, YouTube, etcetera	5.3	3.2	6.0	8.0	10.8	6.7	3.2	4.5	5.8
Television	22.4	14.1	25.3	33.5	24.2	20.7	23.3	19.0	24.6
[DO NOT READ] None of these	1.6	2.5	1.0	2.8	13.7	0.0	0.2	1.7	1.6

Table 37b:

<i>Caution: Small base sizes.</i>	Total %	Town of Braidwood %	Town of Bungendore %	Town of Captains Flat %	Villages %	Rural Resid'l %	Farms %
Newsletters (web/email)	80.2	74.1	83.9	78.4	78.7	81.8	77.3
The Council website (www.Palerang.nsw.gov.au)	40.5	24.3	57.7	35.3	34.3	38.9	36.4
Articles, notices or ads in your local newspaper	79.6	83.6	96.8	77.3	79.7	75.7	70.3
Articles, notices or ads in the Canberra Times	11.4	9.6	13.2	12.9	8.6	13.3	7.5
Announcements on local radio stations	26.5	25.5	32.2	30.7	15.4	27.8	21.4
Social media, such as Twitter, Facebook, YouTube, etcetera	5.3	3.0	7.9	8.0	1.2	5.7	3.3
Television	22.4	15.5	31.3	33.5	12.1	24.1	13.6
[DO NOT READ] None of these	1.6	0.0	0.0	2.8	0.0	1.7	3.3

Table 38a:

Q.22 [ASK ALL] (As you may know) in recent years Council has featured news on its website homepage and you can subscribe there to the emailed newsletter. Have you ever looked at this newsletter?

	Total %	Town of and Area around:			Age			Sex	
		Braidwood	Bungendore	Captains Flat	18-39 years	40-54 years	55+ years	Men	Women
Yes	65.6	66.8	65.7	59.2	59.1	57.1	72.7	68.8	63.6
No	31.0	29.8	30.7	38.7	39.4	38.2	24.2	25.8	34.1
Unsure	3.5	3.4	3.7	2.1	1.5	4.7	3.0	5.4	2.3

Table 38b:

<i>Caution: Small base sizes.</i>	Total %	Town of Braidwood %	Town of Bungendore %	Town of Captains Flat %	Villages %	Rural Resid'l %	Farms %
Yes	65.6	61.1	66.0	59.2	61.9	66.0	68.6
No	31.0	38.9	29.4	38.7	34.9	30.7	26.9
Unsure	3.5	0.0	4.6	2.1	3.3	3.2	4.5

Table 39a:

Q.23 [IF LOOKED INTO] In general, what did you think of the newsletter in terms of the kinds of information it provided...did you think its coverage was excellent, very good, good, fair or poor?

	Total %	Town of and Area around:			Age			Sex	
		Braidwood	Bungendore	Captains Flat	18-39 years	40-54 years	55+ years	Men	Women
Excellent	4.1	2.9	4.8	4.0	4.5	7.9	2.0	0.7	6.4
Very good	20.7	23.7	19.6	16.6	41.4	18.1	18.6	24.5	18.2
Good	41.1	46.5	39.9	25.6	51.1	40.4	39.7	34.1	45.7
Fair	19.8	16.4	20.3	32.8	3.0	21.9	21.5	21.8	18.5
Poor	8.2	3.1	9.9	15.9	0.0	7.3	10.0	14.5	4.0
Unsure	6.1	7.4	5.6	5.1	0.0	4.3	8.1	4.4	7.3

Table 39b:

<i>Caution: Small base sizes.</i>	Total %	Town of Braidwood %	Town of Bungendore %	Town of Captains Flat %	Villages %	Rural Resid'l %	Farms %
Excellent	4.1	0.0	8.1	4.0	1.9	3.4	3.7
Very good	20.7	19.5	19.7	16.6	19.4	19.6	24.8
Good	41.1	31.1	32.3	25.6	45.5	43.1	50.9
Fair	19.8	26.0	24.4	32.8	17.6	18.4	13.6
Poor	8.2	2.8	8.0	15.9	9.3	11.0	3.2
Unsure	6.1	20.5	7.4	5.1	6.3	4.5	3.7

Table 40a:

Q.24 [ASK ALL] What role should Council play in the efficient use of resources and energy and sustainable living ... should Council lead the way, should it keep up with current practices, or shouldn't Council be involved in these matters?

	Total %	Town of and Area around:			Age			Sex	
		Braidwood	Bungendore	Captains Flat	18-39 years	40-54 years	55+ years	Men	Women
Lead the way	39.9	41.6	39.3	38.3	42.7	32.3	44.6	39.5	40.2
Keep up with current trends	50.7	53.1	50.1	45.7	56.1	58.7	44.0	47.4	52.7
Council shouldn't be involved	5.7	1.7	7.2	9.1	1.2	6.7	5.8	10.3	2.8
Unsure	3.7	3.6	3.4	6.9	0.0	2.2	5.5	2.7	4.3

Table 40b:

<i>Caution: Small base sizes.</i>	Total %	Town of Braidwood %	Town of Bungendore %	Town of Captains Flat %	Villages %	Rural Resid'l %	Farms %
Lead the way	39.9	43.6	38.0	38.3	37.7	40.2	40.9
Keep up with current trends	50.7	41.7	51.2	45.7	52.1	49.2	56.8
Council shouldn't be involved	5.7	7.0	7.8	9.1	7.8	6.8	0.0
Unsure	3.7	7.8	3.1	6.9	2.4	3.7	2.2

Table 41a:

Q.25 [ASK ALL] In general, is Council doing enough to enable older people to continue living in the area (if they wish to) or not? IF NO, PROBE: What more should it be doing?

	Total %	Town of and Area around:			Age			Sex	
		Braidwood	Bungendore	Captains Flat	18-39 years	40-54 years	55+ years	Men	Women
Council is doing enough	23.4	25.8	22.9	17.2	38.7	17.9	24.1	32.0	18.2
Council is not doing enough	48.8	42.6	49.5	70.6	26.6	52.0	51.2	37.5	55.8
Unsure	27.8	31.5	27.6	12.2	34.7	30.1	24.7	30.6	26.0

Table 41b:

<i>Caution: Small base sizes.</i>	Total %	Town of Braidwood %	Town of Bungendore %	Town of Captains Flat %	Villages %	Rural Resid'l %	Farms %
Council is doing enough	23.4	40.4	28.8	17.2	17.6	20.5	21.1
Council is not doing enough	48.8	43.4	43.8	70.6	44.8	53.2	42.4
Unsure	27.8	16.2	27.4	12.2	37.7	26.2	36.5

Table 42a:

Q.26 [ASK ALL] given the rate at which Bungendore is growing, is an off-street car park needed in Bungendore, or is the current on-street parking generally adequate?

	Total %	Town of and Area around:			Age			Sex	
		Braidwood	Bungendore	Captains Flat	18-39 years	40-54 years	55+ years	Men	Women
Off-street parking is needed	46.5	41.6	49.9	37.3	57.7	45.8	44.7	47.5	45.9
On-street parking is generally adequate	30.8	28.7	31.3	35.5	38.8	38.0	24.1	32.2	29.9
Unsure/ of no interest to me	22.7	29.7	18.8	27.2	3.6	16.2	31.2	20.3	24.2

Table 42b:

<i>Caution: Small base sizes.</i>	Total %	Town of Braidwood %	Town of Bungendore %	Town of Captains Flat %	Villages %	Rural Resid'l %	Farms %
Off-street parking is needed	46.5	37.2	61.9	37.3	47.7	43.8	43.0
On-street parking is generally adequate	30.8	21.3	32.2	35.5	28.4	31.2	31.1
Unsure/ of no interest to me	22.7	41.5	5.9	27.2	23.9	24.9	25.9

Table 43:

Q.27 [ASK ONLY IN THE BUNGENDORE AREA] I'm now going to read out four things to cater for the future growth of the Bungendore area. As I read out each one, could you tell me whether you fell it is extremely important, very important, quite important or not important ... [READ OUT STATEMENTS, ROTATE]

A Establishing the viability of the water supply

	Total %	Age			Gender	
		18-39 years	40-59 years	55+ years	Men	Women
Not important at all	1.2	0.0	0.0	2.2	0.0	1.9
Not very important	0.0	0.0	0.0	0.0	0.0	0.0
Quite important	5.0	11.8	6.0	2.7	4.8	5.2
Very important	35.0	36.2	21.3	43.7	40.9	31.1
Extremely important	58.8	52.1	72.7	51.4	54.3	61.8
Mean	4.5	4.4	4.7	4.4	4.5	4.5

Table 44:

Q.27 [ASK ONLY IN THE BUNGENDORE AREA] I'm now going to read out four things to cater for the future growth of the Bungendore area. As I read out each one, could you tell me whether you fell it is extremely important, very important, quite important or not important ... [READ OUT STATEMENTS, ROTATE]

B Restricting development on floodplains

	Total %	Age			Gender	
		18-39 years	40-59 years	55+ years	Men	Women
Not important at all	0.9	0.0	0.0	1.6	0.0	1.5
Not very important	4.8	0.0	2.3	7.6	1.7	6.8
Quite important	22.7	25.7	19.8	23.8	25.8	20.7
Very important	24.9	21.0	28.6	23.5	27.6	23.1
Extremely important	46.7	53.3	49.2	43.5	44.9	48.0
Mean	4.1	4.3	4.2	4.0	4.2	4.1

Table 45:

Q.27 [ASK ONLY IN THE BUNGENDORE AREA] I'm now going to read out four things to cater for the future growth of the Bungendore area. As I read out each one, could you tell me whether you felt it is extremely important, very important, quite important or not important ... [READ OUT STATEMENTS, ROTATE]

C Building a traffic bypass around Bungendore

	Total %	Age			Gender	
		18-39 years	40-59 years	55+ years	Men	Women
Not important at all	26.8	38.7	29.6	22.0	20.0	31.3
Not very important	14.8	17.7	15.9	13.3	11.6	16.8
Quite important	22.1	24.4	22.2	21.5	20.3	23.4
Very important	20.6	13.2	22.3	21.3	20.9	20.4
Extremely important	15.7	6.0	10.0	21.9	27.2	8.2
Mean	2.8	2.3	2.7	3.1	3.2	2.6

Table 46:

Q.27 [ASK ONLY IN THE BUNGENDORE AREA] I'm now going to read out four things to cater for the future growth of the Bungendore area. As I read out each one, could you tell me whether you felt it is extremely important, very important, quite important or not important ... [READ OUT STATEMENTS, ROTATE]

D Upgrading of the sewerage treatment works

	Total %	Age			Gender	
		18-39 years	40-59 years	55+ years	Men	Women
Not important at all	3.2	0.0	1.5	5.4	2.8	3.4
Not very important	7.2	11.3	8.3	5.1	10.6	5.2
Quite important	26.3	38.1	26.5	22.7	26.0	26.5
Very important	35.3	26.2	31.2	41.2	47.3	28.1
Extremely important	28.0	24.3	32.5	25.7	13.3	36.8
Mean	3.8	3.6	3.8	3.8	3.6	3.9

Table 47:

Q.28 [ASK ONLY IN THE BRAIDWOOD AREA] Is it extremely important, very important, quite important or not important to build a traffic bypass around Braidwood to cater for the future growth of the areas?

	Total %	Age			Gender	
		18-39 years	40-59 years	55+ years	Men	Women
Not important at all	30.4	71.3	45.8	14.3	35.6	28.4
Not very important	11.9	0.0	15.1	11.9	12.4	11.7
Quite important	24.4	0.0	13.0	35.4	28.7	22.8
Very important	18.3	6.3	13.1	23.4	13.5	20.1
Extremely important	15.0	22.4	13.1	14.9	9.9	17.0
Mean	2.8	2.1	2.3	3.1	2.5	2.9

Appendix: 2015 Questionnaire

W2429 Palerang Council Community Survey 2015 – **[Final]** – 20150522

Les Winton – 0414 504 832



Introduction: Good morning/afternoon/evening, I'm from Winton Research, an independent market research organisation, and we are conducting a study for Palerang Council to monitor a range of activities and programs. The survey will take around 10 to 15 minutes and we would appreciate your opinions firstly:

SCREENING QUESTION:

Q.A About how long have you lived in this area?

Q.No. [1-4]

	□
Less than 6 months	1
6 months to 11 months	2
1 to 2 years	3
3 to 5 years	4
6 to 10 years	5
11 to 20 years	6
Over 20 years	7

⇒ Thank and terminate
 ⇒ Go on
 ⇒ Go on
 ⇒ Go on
 ⇒ Go on
 ⇒ Go on
 ⇒ Go on

ASK ALL

Q.B Now just to confirm,Do you live in the Town of Braidwood, Town of Bungendore or Town of Captains Flat or a villages (code 1-4) or do you live on a rural residential property or Farm outside those towns, or a village (Code 5 or 6)

	□
In Town of Braidwood	1
In Town of Bungendore	2
In Town of Captains Flat	3
In a village (read villages at C below)	4
On a rural residential property	5
On a farm	6

Those who don't live in Town Braidwood, Bungendore or Captain's Flat but live in a village (code4 above) ask

Do you live in one of the following villages?.....read out villages.

Those not in a village ASK Do you live in the area of Wamboin, Burra, Bywong, Hoskinstown, Sutton, Carwoola?

Q.C [PROBE FOR VILLAGE OR AREA]

	□□
In the village of Araluen	01
In village of Majors Creek	02
In the village of Mongarlowe	03
In the village of Nerriga	04
In the area of Burra	05
In the area of Bywong	06
In the area of Carwoola (ASK Is that part of Palerang)	07
In the area of Hoskinstown	08
In the area of Sutton (ASK Is that part of Palerang)	09
In the area of Royalla (ASK Is that part of Palerang)	10
In the area of Wamboin	11

+++++

Q.1 [ASK ALL] Now thinking specifically about the area where you live, what do you feel are all the GOOD things about living in this area? ... What do you most like about living here? [PROBE FULLY]

Write answer in here, then attempt to code in list below:		
DO NOT READ OUT, ACCEPT MULTIPLES		
Good schools/educational opportunities	1	<input type="checkbox"/>
Close to Canberra	2	<input type="checkbox"/>
Close to Queanbeyan	3	<input type="checkbox"/>
Close to other places (eg, Sydney, coastal beaches, Melbourne)	4	<input type="checkbox"/>
Easy to move around/good roads/great networks of roads	5	<input type="checkbox"/>
Entertainment/arts/culture/movies	6	<input type="checkbox"/>
Fresh air/unpolluted atmosphere/healthy air	7	<input type="checkbox"/>
Good climate/four distinct seasons	8	<input type="checkbox"/>
Good shopping centre/opportunities	9	<input type="checkbox"/>
Wide open spaces/rural atmosphere/green/countryside	0	<input type="checkbox"/>
Less crime/low crime rate	1	<input type="checkbox"/>
Less traffic congestion/hardly any peak hour	2	<input type="checkbox"/>
Lower cost of living/cheaper than city living	3	<input type="checkbox"/>
Quiet/peaceful/not hectic	4	<input type="checkbox"/>
Safe for children	5	<input type="checkbox"/>
Sense on community/friendly people/community feeling	6	<input type="checkbox"/>
Tidy/neat/clean	7	<input type="checkbox"/>
Well planned/well laid out	8	<input type="checkbox"/>
Heritage aspects	9	<input type="checkbox"/>
Other (Specify)	0	<input type="checkbox"/>
No good things/unsure	1	<input type="checkbox"/>

Q.2 [ASK ALL] And what if anything do you feel are the NOT SO GOOD things about living in this area? ... What needs to be improved about living here? [PROBE FULLY]

Write answer in here, then attempt to code in list below:		
DO NOT READ OUT, ACCEPT MULTIPLES		
Extremes of seasons/summer too hot/winter too cold	1	<input type="checkbox"/>
High prices (eg, petrol, air fares, tip fees, bus fares, etc)	2	<input type="checkbox"/>
Growing too fast/too many new houses	3	<input type="checkbox"/>
Not growing fast enough/stagnating/dying	4	<input type="checkbox"/>
Lack of variety of shopping	5	<input type="checkbox"/>
Not enough to do/too quiet/boredom	6	<input type="checkbox"/>
Over-regulated/too many rules	7	<input type="checkbox"/>
People not friendly (anymore)/no community feeling	8	<input type="checkbox"/>
Public transport/none/not often enough/unreliable	9	<input type="checkbox"/>
Inadequate schools	1	<input type="checkbox"/>
Roads/poor upkeep/potholed	2	<input type="checkbox"/>
Too far from Sydney/Melbourne/beaches	3	<input type="checkbox"/>
Untidy/graffiti/rubbish everywhere	4	<input type="checkbox"/>
Dangerous drivers/road rage	5	<input type="checkbox"/>
Drugs/lack of policing	6	<input type="checkbox"/>
Garbage collection/none/infrequent/unreliable	7	<input type="checkbox"/>
Household recycling service/none/infrequent/unreliable	8	<input type="checkbox"/>
Other (Specify)	9	<input type="checkbox"/>
No not so good things/unsure	1	<input type="checkbox"/>

Q.3 [ASK ALL] Overall, how satisfied are you with this town/village/area as a place to live?

	<input type="checkbox"/>
--	--------------------------

Completely satisfied	1	
Very satisfied	2	
Quite satisfied	3	
Not very satisfied	4	⇒ Probe
Not satisfied at all	5	⇒ Probe
Unsure	6	
In what ways could the situation be improved? Write in any additional comments below:		

Q.4a [ASK ALL] In general, how satisfied are you with the following aspects of this town/village/area..... firstly (READ OUT FIRST ASPECT)..... Would you say you are completely satisfied (CS), very satisfied (VS), quite satisfied (QS), not very satisfied (NV) or not at all satisfied (NA) with that aspect?

Q.4b [FOR EACH NV/NA RESPONSE, ASK:] What needs to be done to improve the situation? Anything else?

<i>Read out, rotate list:</i>	NA ↓	NV ↓	QS ↓	VS ↓	CS ↓	
1. The ways in which your area is developing	1	2	3	4	5	<input type="checkbox"/>
2. The 'look' (or appearance) of the place	1	2	3	4	5	<input type="checkbox"/>
3. The nature and speed of housing development in the area	1	2	3	4	5	<input type="checkbox"/>
4. The connecting roads through the area (main roads)	1	2	3	4	5	<input type="checkbox"/>
5. The local roads in the area	1	2	3	4	5	<input type="checkbox"/>
6. The garbage tip facilities now available in the area [CAPTAIN'S FLAT ONLY: SAY 'transfer station' in place of 'garbage tip facilities']	1	2	3	4	5	<input type="checkbox"/>
7. The sense of community (groups, networks) in the area (community groups/support networks)	1	2	3	4	5	<input type="checkbox"/>
8. The range of services available to the community	1	2	3	4	5	<input type="checkbox"/>
9. The availability of employment/jobs in the Council area	1	2	3	4	5	<input type="checkbox"/>
10. How tourism is being handled in the Council area	1	2	3	4	5	<input type="checkbox"/>
[ASK ONLY IN BRAIDWOOD, BUNGENDORE & CAPTAINS FLAT:]	1	2	3	4	5	<input type="checkbox"/>
11. The household water supply in the area	1	2	3	4	5	<input type="checkbox"/>

Q.5 In which city or town do your weekly or major food, grocery or major supermarket shopping? [RECORD RESPONSE BELOW]

Q.6 Where do you shop for major household items such as whitegoods and furniture? [RECORD RESPONSE BELOW]

Q.7 Where do you mostly visit for minor top-up food and grocery shopping? [RECORD RESPONSE BELOW]

Q.8 In which city or town are your main healthcare providers located, such as your doctor, dentist and the like? [RECORD RESPONSE BELOW]

Q.9 Which city or town do you usually visit for entertainment? [RECORD RESPONSE BELOW]

Q.10 Which city or town do you mostly associate with the provision of primary, secondary or tertiary education for your family? [RECORD RESPONSE BELOW]

	Q.5	Q.6	Q.7	Q.8	Q.9	Q.10
OUTSIDE PALERANG:	[]	[]	[]	[]	[]	[]
Batemans Bay + nearby towns	01	01	01	01	01	01
Canberra only or mainly	02	02	02	02	02	02
Canberra/Queanbeyan about equally	23	23	23	23	23	23
Queanbeyan only or mainly	24	24	24	24	24	24

Goulburn + nearby towns	03	03	03	03	03	03
Murrumbateman + nearby	04	04	04	04	04	04
Yass + nearby towns	05	05	05	05	05	05
Further (eg, Sydney, Melbourne, etc)	06	06	06	06	06	06
INSIDE PALERANG:						
Araluen [village]	07	07	07	07	07	07
Braidwood [town]	08	08	08	08	08	08
Bungendore [town]	09	09	09	09	09	09
Burra [area]	10	10	10	10	10	10
Bywong [area]	11	11	11	11	11	11
Captains Flat [town]	12	12	12	12	12	12
Carwoola [area]	13	13	13	13	13	13
Hoskinstown [area]	14	14	14	14	14	14
Majors Creek [village]	15	15	15	15	15	15
Mongarlowe [village]	16	16	16	16	16	16
Nerriga [village]	17	17	17	17	17	17
Royalla [area]	18	18	18	18	18	18
Sutton [area]	19	19	19	19	19	19
Wamboin [area]	20	20	20	20	20	20
Unsure/it varies/don't know	21	21	21	21	21	21
Not applicable/don't do that	22	22	22	22	22	22

Q.11 As you may know, the State Government is seeking to amalgamate various councils throughout NSW, and it has been suggested that Palerang Council be merged with Queanbeyan City Council. In your opinion, should Palerang Council:

(Read out, rotate, mark first mention):		[]
Continue as an independent council in its own right	1	⇒ Probe
Amalgamate with Queanbeyan Council	2	⇒ Probe
Amalgamate with Goulburn Council	3	⇒ Probe
Amalgamate with Yass Valley Council	4	⇒ Probe
Amalgamate with some other Council/s (<i>probe – which council/s?</i>)	5	⇒ Probe
Be split up among adjoining Councils	6	⇒ Probe
Unsure	7	
Why do you say that?		

Q.12a [ASK ALL] Now thinking of the size of the population around here, over the next 20 years or so would you like to see it increase or stay at about the same level as now? [IF INCREASE, PROBE:] How much would you like to see the population increase by ... for example, over the next 20 years or so would you like to see it increase by half, or double, or triple, or would you like to see it grow even further than that over the next 20 years?

		□
More than triple in size	1	Ask Q12b
Triple in size	2	Ask Q12b
Double in size	3	Ask Q12b
Increase by half	4	Ask Q12b
Stay the same	5	Ask Q12b
Grow smaller/decrease in size	6	Ask Q12b
Unsure	7	Go to Q13

Q.12b [ASK ALL EXCEPT UNSURE:] Why do you say that? [PROBE FULLY]

Write in below:

Q.13 [ASK ALL] And what about the future character of the area ... would you like to see the character of the area change, or remain about the same? IF CHANGE, PROBE: In what ways would you like the character of the area to change, for example what other kinds of development would you like to see happen?

		□
Change	1	⇒ Probe
Remain about the same	2	
<i>In what ways could the situation be improved? Write in any additional comments below:</i>		

Q.14 [ASK ALL] Block sizes in newer housing estates are generally a bit smaller than in older estates. Do these smaller block sizes improve or detract from the character of the area, or does the character of the area remain the same? IF IMPROVE/DETRACT, PROBE: In what ways do the smaller block sizes improve/detract from the character of the area?

		□
Improve	1	⇒ Probe
Detract from	2	⇒ Probe
Remain about the same	3	
<i>Write in any comments below:</i>		

Q.15 [ASK ALL] In some towns medium density developments including town houses and duplexes have been taking place. Do these medium density developments improve or detract from the character of the area, or does the character of the area remain the same? IF IMPROVE/DETRACT, PROBE: In what ways do the medium density developments improve/detract from the character of the area?

		□
Improve	1	⇒ Probe
Detract from	2	⇒ Probe
Remain about the same	3	
<i>Write in any comments below:</i>		

Q.16 I'm now going to read out a list of some of the many services provided by Palerang Council. As I read out each one, I'd like you to rate Council's performance on a scale where '10' means excellent, and '1' means terrible? Whether you have personal experience of them or not, I'd like you to rate them, based on your impressions and perceptions.

	PERFORMANCE										
1. the maintenance of roads in towns and villages	1	2	3	4	5	6	7	8	9	0	□
2. the maintenance of connecting roads in their care	1	2	3	4	5	6	7	8	9	0	□
3. the management of residential development within the area in recent years	1	2	3	4	5	6	7	8	9	0	□
4. the household garbage collection in some areas	1	2	3	4	5	6	7	8	9	0	□
5. the knowledge and accuracy of council staff	1	2	3	4	5	6	7	8	9	0	□
6. the courtesy and helpfulness of council staff	1	2	3	4	5	6	7	8	9	0	□

- Q.17 [ASK ALL] Thinking of Palerang Council as a whole, that is, taking into account all the services they provide and facilities they run, not just the few I've mentioned, how would you rate the Council's performance overall Again, a score of 10 would be excellent performance and 1 would be terrible how would you rate the overall performance of Palerang Council as a whole?

The overall performance of Palerang Council as a whole	1	2	3	4	5	6	7	8	9	10	<input type="checkbox"/>
--	---	---	---	---	---	---	---	---	---	----	--------------------------

- Q.18 [ASK ALL] How well informed do you feel about the overall activities and initiatives of the Council? On a scale of 1 to 10 where a score of 10 would be totally well informed and 1 would be not informed at all?

How well informed do you feel about the overall activities and initiatives of the Council?	1	2	3	4	5	6	7	8	9	10	<input type="checkbox"/>
--	---	---	---	---	---	---	---	---	---	----	--------------------------

- Q.19 [ASK ALL] How well does the Council consult and engage with the community? On a scale of 1 to 10 where a score of 10 would be consulting and engaging extremely well and 1 would be consulting and engaging extremely poorly?

How well does the Council consult and engage with the community?	1	2	3	4	5	6	7	8	9	10	<input type="checkbox"/>
--	---	---	---	---	---	---	---	---	---	----	--------------------------

- Q.20 [ASK ALL] In which of the following ways do you obtain information from Palerang Council at the moment? [READ OUT PRECODES]

- Q.21 [ASK ALL] Including those you have mentioned, in which ways would you prefer to obtain information from Palerang Council in future? [READ OUT PRECODES]

READ OUT, ROTATE	Currently obtain	<input type="checkbox"/>	Would prefer	<input type="checkbox"/>
Newsletters (web/email)	1	<input type="checkbox"/>	1	<input type="checkbox"/>
The Council website (www.Palerang.nsw.gov.au)	2	<input type="checkbox"/>	2	<input type="checkbox"/>
Articles, notices or ads in your local newspaper	3	<input type="checkbox"/>	3	<input type="checkbox"/>
Articles, notices or ads in the Canberra Times	4	<input type="checkbox"/>	4	<input type="checkbox"/>
Announcements on local radio stations	5	<input type="checkbox"/>	5	<input type="checkbox"/>
Social media, such as Twitter, Facebook, YouTube, etcetera	6	<input type="checkbox"/>	6	<input type="checkbox"/>
Television	7	<input type="checkbox"/>	7	<input type="checkbox"/>
[DO NOT READ] None of these	8	<input type="checkbox"/>	8	<input type="checkbox"/>

- Q.22 [ASK ALL] (As you may know) in recent years Council has displayed news on its website homepage and invited subscriptions to a regular emailed newsletter. Have you ever looked at this newsletter?

	<input type="checkbox"/>	
Yes	1	⇒ ASK Q.23
No	2	⇒ GO TO Q.24
Unsure	3	⇒ GO TO Q.24

- Q.23 [IF LOOKED INTO] In general, what did you think of the newsletter in terms of the kinds of information it provided...did you think its coverage was excellent, very good, good, fair or poor?

:	<input type="checkbox"/>
Excellent	1
Very good	2
Good	3
Fair	4
Poor	5
Unsure	6

- Q.24 [ASK ALL] What role should Council play in the efficient use of resources and energy and sustainable living ... should Council lead the way, should it keep up with current practices, or shouldn't Council be involved in these matters?

	<input type="checkbox"/>
Lead the way	1
Keep up with current trends	2
Council shouldn't be involved	3
Unsure	4

Q.25 [ASK ALL] In general, is Council doing enough to enable older people to continue living in the area (if they wish to) or not? IF NO, PROBE: What more should it be doing?

	□
Council is doing enough	1
Council is not doing enough	2
Unsure	3
<i>Write in any comments below:</i>	

⇒ ASK Probe

Q.26 [ASK ALL] given the rate at which Bungendore is growing, is an off-street car park needed in Bungendore, or is the current on-street parking generally adequate?

	□
Off-street car park is needed	1
On-street parking is generally adequate	2
Unsure/of no interest to me	3

Q.27 [ASK ONLY IN THE BUNGENDORE AREA] I'm now going to read out four things to cater for the future growth of the Bungendore area. As I read out each one, could you tell me whether you felt it is extremely important, very important, quite important or not important ... [READ OUT STATEMENTS, ROTATE]

<i>Read out, rotate list:</i>	Not impt at all ↓	Not very important ↓	Quite important ↓	Very important ↓	Extremely important ↓	
A Establishing the viability of the water supply	1	2	3	4	5	□
B Restricting development on floodplains	1	2	3	4	5	□
C Building a traffic bypass around Bungendore	1	2	3	4	5	□
D Upgrading of the sewerage treatment works	1	2	3	4	5	□

Q.28 [ASK ONLY IN THE BRAIDWOOD AREA] Is it extremely important, very important, quite important or not important to build a traffic bypass around Braidwood to cater for the future growth of the areas?

<i>Read out:</i>	Not impt at all ↓	Not very important ↓	Quite important ↓	Very important ↓	Extremely important ↓	
A Building a traffic bypass for Braidwood	1	2	3	4	5	□

Q.29 [ASK ALL] Your age?

	□
18 to 20 years	1
20 to 24 years	2
25 to 39 years	3
40 to 54 years	4
55 to 64 years	5
65+ years	6

Q.30 [ASK ALL] Your gender?

	□
Male	1
Female	2

Q.31a [ASK ALL] Do you work full-time, part-time or are you not employed at the moment? (IF NOT EMPLOYED, PROBE) What do you do at the moment?

	□
Employed full-time/own or run business	1
Employed part-time or casual	2
Unemployed (ie, and looking for work)	3
Student	4
Home duties/home manager	5
Retired/pensioner/self funded retiree	6

Carer	7
Disability	8

Q.31b [IF EMPLOYED, ASK] What is your occupation? [PROBE FOR TYPE OF JOB AND LEVEL]

	□
Managers and administrators	1
Professionals	2
Associate professionals	3
Tradespersons and related workers	4
Advanced clerical and service workers	5
Intermediate clerical, sales and service workers	6
Intermediate production and transport workers	7
Labourers and related workers	8
Farmers, graziers, growers	9
Other (do not use unless un-codable)	0

Q.31c [IF EMPLOYED, ASK] In which town or area do you work?

	□
From home	1
Travel, eg, salesperson, taxi driver, courier, tradesperson, etc	2
Bungendore (area)	3
Braidwood (area)	4
Captains Flat (area)	5
Local village (area)	6
Queanbeyan	7
Canberra	8
Other (specify)	9

Q.32 [ASK ALL] How many people are there in your household?

	□
1	1
2	2
3	3
4	4
5+	5

Q.33 [ASK ALL] What is the age of the youngest person or child in your household?

	□
Under 5	1
5-12	2
13-18	3
Over 18/adult	4

Q.34 [ASK ALL] What kind of dwelling do you live in – is it a ... (READ OUT LIST)?

	□
Detached house in town/village	1
Detached house on acreage/farm/rural residential	2
Semi-detached house	3
Townhouse or terrace	4
Home unit or flat	5
Other (specify)	6

Q.35 [ASK ALL] And do you own it or are your renting? (IF OWN, ASK) Do you own it outright or are you paying it off?

	□
--	---

Own/paying off	1
Renting	2
Other (specify)	3

Q.36 [ASK ALL] Finally, are there any other comments you'd like to make, or issues you'd like to raise?

Write in:

Respondent's name:	Phone:
---------------------------	---------------

Thank you for your help !

I certify that this interview was conducted according to the Code of Practice of the Australia Market and Social Research Society (AMRS), and has been checked for completeness.

Interviewer's name:	Signature:	Date:
----------------------------	-------------------	--------------

--	--	--	--	--	--	--	--	--	--	--	--

This document is copyright, Winton Sustainable Research Strategies[©] 2015. Reproduction in whole or part is prohibited without the written permission of Winton Sustainable Research Strategies. All questionnaires are confidential. Completed and blank questionnaires are to be returned to Winton Sustainable Research Strategies Pty Ltd